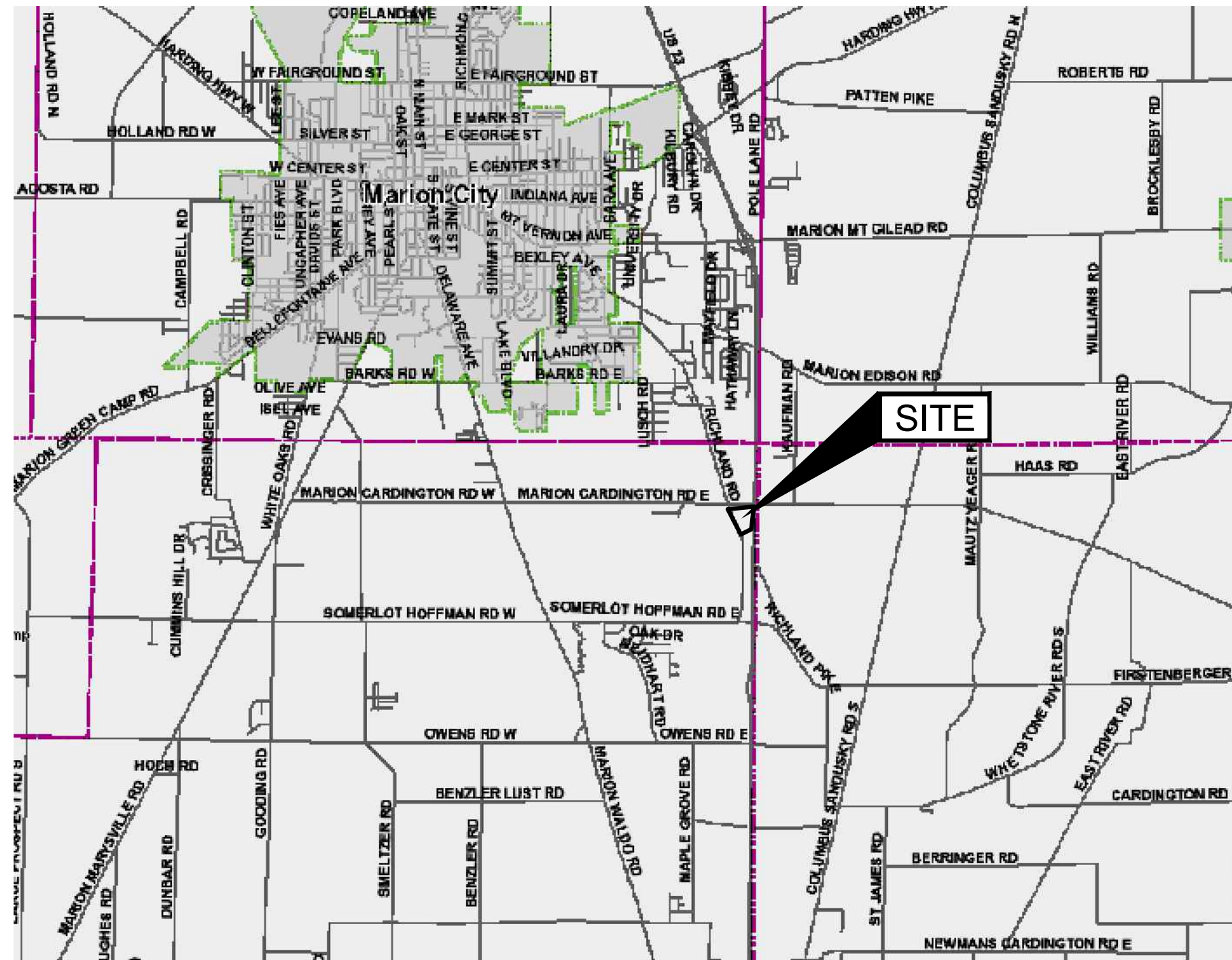


CONSTRUCTION SITE PLANS FOR: OMNESS DESIGN MARION CO. WWTP GARAGE

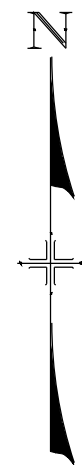
SITUATED IN THE STATE OF OHIO, COUNTY OF MARION CITY, PLEASANT TOWNSHIP



LOCATION MAP

LATITUDE: 40.548344°
LONGITUDE: -83.075984°

SCALE: NONE



SITE ADDRESS

2160 RICHLAND RD
MARION OH 43302

INDEX OF SHEETS

TITLE SHEET	1
GENERAL NOTES	2
EXISTING SITE	3
SCHEMATIC LAYOUT	4
GRADING PLAN	5
UTILITY PLAN	6
STANDARD DETAILS	7
SWP3 PLAN	8
SWP3 NOTES	9
SWP3 DETAILS	10



I HEREBY STATE THAT THESE PLANS HAVE BEEN PREPARED WITH OUR KNOWLEDGE AND CONCURRENCE AND REPRESENT OUR INTENT AND INTEREST.

MARION COUNTY SANITARY ENGINEER

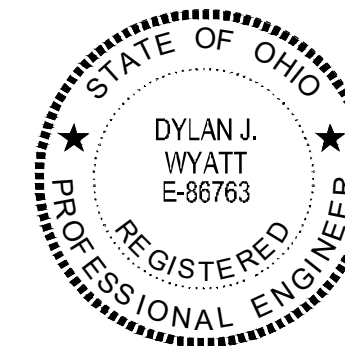
DATE

EASEMENT REFERENCE			REVISIONS		
City's No.	County Recorder Volume Page	Grantor	No.	Description	Approval Date
			1	REVISE UTILITY CONNECTIONS	DJW 2/16/24
				AS BUILT	

Plans Prepared By :
Makeover & Associates, Inc.
P.O. BOX 325, 1810 E. MANSFIELD ST.
BUCYRUS, OHIO 44820
Phone: (419) 562-7757 Fax: (419) 562-4717

DYLAN J. WYATT

E-86763 _____
Ohio Reg. No. _____ Date _____



Signatures below signify only concurrence with the general purpose and general location of the project. All technical details remain the responsibility of the engineer preparing the plans.

ENG. FILE NO. _____
IMP. ACCT. NO. _____
CONTRACT NO. _____
COMPLETION DATE _____
CONTRACTOR _____

OMNESS DESIGN INC.
MARION CO. WWTP GARAGE
2160 RICHLAND RD

Scale : Horiz. AS NOTED
Vert. AS NOTED
Original Sheet Size = 24"x36"
Original Date: 02/16/24

Sheet No. : 1 OF 0
S:\2023\202 Dwg. No. : 23-202-001

GENERAL NOTES

WHERE SPECIFIED, THE CURRENT STATE OF OHIO DEPARTMENT OF TRANSPORTATION CONSTRUCTION AND MATERIAL SPECIFICATIONS (O.D.O.T. NUMBERS) SHALL APPLY EXCEPT AS MODIFIED OR EXPANDED HEREIN OR IN THE TECHNICAL SPECIFICATIONS

UNDERGROUND UTILITIES

THE LOCATIONS OF THE UNDERGROUND UTILITIES AS SHOWN ON THE PLANS WERE OBTAINED FROM THE OWNERS OF THE UTILITY. THE LOCATION OF THE EXISTING UTILITIES AS SHOWN ON THESE PLANS IS APPROXIMATE. THE EXACT LOCATION SHALL BE THE RESPONSIBILITY OF THE CONTRACTOR. THE EXISTING UTILITIES IN THE PROJECT AREA SHALL BE PROTECTED DURING CONSTRUCTION.

UTILITIES NOTIFICATION

AT LEAST TWO (2) WORKING DAYS PRIOR TO COMMENCING CONSTRUCTION OPERATIONS IN AN AREA WHICH MAY INVOLVE UNDERGROUND UTILITY FACILITIES, THE CONTRACTOR SHALL NOTIFY THE FOLLOWING COMPANIES:

1. OHIO UTILITY PROTECTION SERVICE (811)
2. MARION COUNTY SANITARY ENGINEER
3. PLEASANT TOWNSHIP
- 4.
- 5.
- 6.

MAINTAINING TRAFFIC

THE CONTRACTOR SHALL BE RESPONSIBLE FOR MAINTAINING AND CONTROLLING TRAFFIC ON ALL STREETS AND ROADS AFFECTED BY CONSTRUCTION AND SHALL, PRIOR TO ANY CONSTRUCTION, SUBMIT A CONSTRUCTION SCHEDULE TO THE LOCAL AUTHORITY FOR APPROVAL INDICATING DATES AND DURATION OF EACH PHASE OF CONSTRUCTION.

ALL CONSTRUCTION SIGNS AND TEMPORARY TRAFFIC CONTROL AND PROTECTION DEVICES SHALL BE ERECTED AND MAINTAINED IN ACCORDANCE WITH "OHIO DEPARTMENT OF TRANSPORTATION MANUAL OF UNIFORM TRAFFIC CONTROL DEVICES FOR STREETS AND HIGHWAYS," AND O.D.O.T. ITEM 614 - MAINTAINING TRAFFIC. PAYMENT FOR MAINTAINING TRAFFIC SHALL BE INCLUDED IN THE CONTRACT PRICE FOR THE PROJECT.

TESTING OF MATERIALS

ANY MATERIALS DELIVERED OR OTHERWISE INCORPORATED INTO THE PROJECT MAY BE SUBJECT TO TESTING BY THE ENGINEER TO INSURE COMPLIANCE WITH SPECIFICATIONS. TESTS PERFORMED WILL BE PAID FOR BY THE OWNER WITH NO ADDITIONAL COST ASSUMED BY THE CONTRACTOR.

MISCELLANEOUS ITEMS

THE CONTRACTOR SHALL REMOVE ANY MAILBOX, STREET SIGNS, YARD LIGHTS, FENCES, LAWN ORNAMENTS, ETC. WHICH COULD BE DAMAGED DURING THE COURSE OF CONSTRUCTION AND RESET SAME AFTER CONSTRUCTION HAS PASSED THE AREA.

ANY CATCH BASINS, LAWNS, DRIVEWAYS, OR OTHER VARIOUS ITEMS DISTURBED DURING THE CONSTRUCTION OF THE PROJECT SHALL BE REPAIRED TO A LIKE OR BETTER CONDITION. PAYMENT OF THIS WORK SHALL BE INCLUDED IN THE CONTRACT PRICE FOR THE PROJECT.

TRENCH PROTECTION

THE CONTRACTOR SHALL PROVIDE SHORING, SHEETING, BRACING, TRENCH BOX, ETC., AS REQUIRED TO PROTECT EXISTING STRUCTURES, UTILITIES, WORKMEN, ETC. PAYMENT OF THIS WORK SHALL BE INCLUDED IN THE CONTRACT PRICE FOR THE PROJECT.

BACKFILLING SHALL FOLLOW IMMEDIATELY BEHIND CONSTRUCTION AND ONLY THE MINIMUM LENGTH OF TRENCH REQUIRED FOR CONSTRUCTION SHALL BE OPEN AT ANY GIVEN TIME.

CONCRETE

ALL CONCRETE UTILIZED WITHIN THIS PROJECT SHALL BE O.D.O.T. CLASS "QC MISC" UNLESS OTHERWISE STATED. PAYMENT FOR CONCRETE SHALL BE INCLUDED IN THE CONTRACT PRICE FOR THE PROJECT.

CLEARING AND GRUBBING

THIS WORK SHALL CONSIST OF CLEARING, GRUBBING, SCALPING, REMOVAL OF TREES AND STUMPS, AND DISPOSING OF ALL VEGETATION AND DEBRIS WITHIN THE LIMITS OF THE PROJECT AREA AS DIRECTED BY THE ENGINEER. PAYMENT FOR CLEARING AND GRUBBING SHALL BE INCLUDED IN THE CONTRACT PRICES FOR THE PROJECT.

AGGREGATE BACKFILL

CONTRACTOR SHALL USE O.D.O.T. ITEM 304 BACKFILL IN ALL UTILITY TRENCHES IN ALL DISTURBED ASPHALT OR PROPOSED ASPHALT AREAS UNLESS OTHERWISE NOTED. PAYMENT FOR AGGREGATE BACKFILL MATERIAL SHALL BE INCLUDED IN THE CONTRACT PRICES FOR THE PROJECT.

EARTH BACKFILL

THE CONTRACTOR SHALL BE RESPONSIBLE FOR PLACING SUITABLE EARTH BACKFILL IN ALL GRASS AREAS. THE TOP 6 INCHES OF THE FILL MATERIAL SHALL BE TOPSOIL. PAYMENT FOR EARTH BACKFILL MATERIAL AND TOPSOIL SHALL BE INCLUDED IN THE CONTRACT PRICES FOR THE PROJECT.

SEEDING AND MULCHING

ALL GRASS AREAS DISTURBED DURING THE COURSE OF THE CONTRACT SHALL BE PROPERLY SEEDED, MULCHED, AND FERTILIZED ACCORDING TO O.D.O.T. ITEM 659. PAYMENT FOR SEEDING AND MULCHING SHALL BE INCLUDED IN THE CONTRACT PRICES FOR THE PROJECT.

EXCAVATION

CONTRACTOR SHALL REMOVE ALL TOPSOIL ENCOUNTERED PRIOR TO PLACING PROPOSED FILL MATERIAL AND REPLACE WITH SUITABLE CLAY SOIL TO SUBGRADE ELEVATIONS. IN CUT AREAS, A MINIMUM OF 12" OF 203 MATERIAL SHALL BE REMOVED AND PLACED TO PROPER GRADE AND COMPACTION. PAYMENT FOR EXCAVATION SHALL BE INCLUDED IN THE CONTRACT PRICE FOR THE PROJECT.

PROOF ROLLING AND SOFT SUBGRADE REPAIRS

UPON COMPLETION OF PREPARING THE SUBGRADE AND PRIOR TO THE PLACEMENT OF THE OVERLYING COURSE, THE CONTRACTOR SHALL PROOF ROLL THE SUBGRADE WITH A LEGALLY FULLY LOADED TANDEM AXLE DUMP TRUCK IN THE PRESENCE OF AN ENGINEER. ANY SOFT SUBGRADE ENCOUNTERED, IN WHICH SATISFACTORY STABILITY CANNOT BE OBTAINED BY MOISTURE CONTROL AND COMPACTION, SHALL HAVE THE UNSTABLE MATERIAL EXCAVATED TO A DEPTH REQUIRED BY AN ENGINEER. SUITABLE MATERIAL SHALL THEN BE PLACED IN THE EXCAVATED AREA, COMPACTED, AND SHAPED TO CONFORM WITH PLAN LINES. THE REPAIRED AREAS SHALL THEN BE PROOF ROLLED TO VERIFY THEIR STABILITY. PAYMENT FOR PROOF ROLLING AND SUBGRADE REPAIRS SHALL BE INCLUDED IN THE CONTRACT PRICES FOR THE PROJECT.

STORM SEWERS

THE CONTRACTOR MAY USE THE FOLLOWING MATERIAL SPECIFICATIONS IN PREPARING THE UNIT PRICE BID FOR THE STORM SEWER CONDUIT.

1. ADS N-12 ST IB PERFORATED PIPE (PER ASTM F-2648) WITH BUILT IN BELL AND SPIGOT (PER ASTM F-2648) WITH GASKETS (PER ASTM F-477) FOR SIZES: 2" - 60"

TO INSURE PROPER HORIZONTAL AND VERTICAL ALIGNMENT OF THE STORM SEWERS DURING CONSTRUCTION, THE CONTRACTOR SHALL USE A LASER ALIGNMENT DEVICE CAPABLE OF BOTH HORIZONTAL AND VERTICAL ADJUSTMENT.

ALL TRENCHES FOR THE STORM SEWER SHALL CONFORM TO STANDARD DRAWING STM-5 BEDDING FOR STORM SEWERS LOCATED IN STANDARD DRAWINGS. PAYMENT FOR STORM SEWER TRENCH AND BEDDING SHALL BE INCLUDED IN THE CONTRACT PRICE FOR THE PROJECT.

ALL CATCHBASINS SHALL CONFORM TO ODOT STANDARD DETAILS CB1 AND CB2 AS SHOWN IN THE STANDARD DETAILS. CATCHBASINS TO HAVE 2-4 FINGER DRAINS, 4"Ø, LENGTH TO FIT AREA, BUT NOT MORE THAN 15'. PERFORATED STORM CONDUITS MAY SERVICE AS FINGER DRAINS.

SANITARY SERVICE CONNECTION

THE CONTRACTOR MAY USE THE FOLLOWING MATERIAL SPECIFICATIONS IN PREPARING THE CONTRACT PRICE FOR THE PROJECT.

1. ASTM D-3034, SDR-35, POLYVINYL CHLORIDE

ALL POLYVINYL CHLORIDE PIPE SHALL MEET ASTM D-3212 JOINT SPECIFICATIONS.

TO INSURE PROPER HORIZONTAL AND VERTICAL ALIGNMENT OF THE SANITARY SEWERS DURING CONSTRUCTION, THE CONTRACTOR SHALL USE A LASER ALIGNMENT DEVICE CAPABLE OF BOTH HORIZONTAL AND VERTICAL ADJUSTMENT.

ALL TRENCHES FOR THE SANITARY SEWER SHALL CONFORM TO STANDARD DRAWING SAN-21 TRENCH AND BEDDING LOCATED IN STANDARD DRAWINGS. PAYMENT FOR SANITARY SEWER TRENCH AND BEDDING SHALL BE INCLUDED IN THE CONTRACT PRICE FOR THE PROJECT.

CLEANOUTS WILL BE INSTALLED AT CHANGES IN ALIGNMENT.

ROOF AND FOUNDATION DRAIN CONNECTIONS TO THE SANITARY SEWER ARE PROHIBITED.

WATER SERVICE CONNECTION

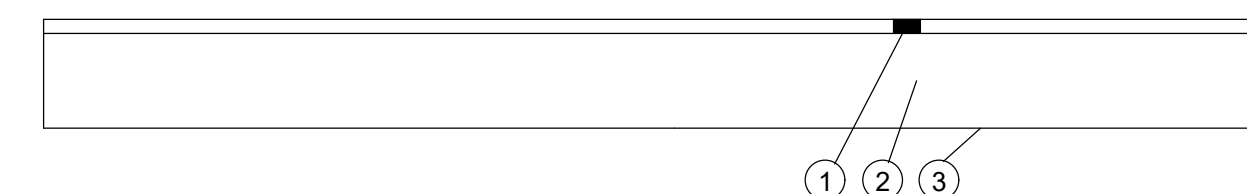
THE MATERIAL SUPPLIED FOR THE 1" WATER SERVICE LINES SHALL BE THE FOLLOWING:

1. ASTM D-2737 CTS POLYETHYLENE PIPE, DR 9, 250 PSI, WITH INSTALLATION MEETING ASTM D-2774

ITEM 452 NON-REINFORCED CONCRETE PAVEMENT

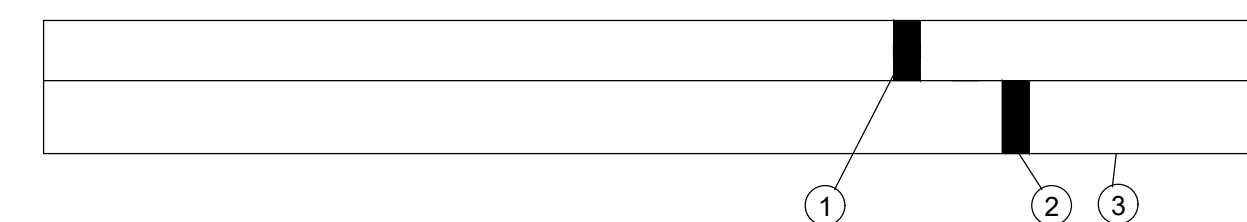
1. 8" THICK CONCRETE SLAB - 4500 PSI AT 28 DAYS, 6 % AIR ENTRAINMENT, 5" MAX. SLUMP, W/C = 0.40 (WATER TO CEMENT RATIO).
2. WITHIN 24 HOURS AFTER EACH CONCRETE SLAB PLACEMENT, SAW CUT, 2" DEPTH. SLAB JOINTS SHALL BE SPACED 10'-12' ON CENTER MAX. WITH LENGTH TO WIDTH OF SLAB AREAS NO MORE THAN 1.5:1. PROVIDE ADDITIONAL JOINTS AT BUILDING CORNERS, TRANSITIONS AND PENETRATIONS PER PRACTICE STANDARDS.

TYPICAL STONE PAVEMENT SECTION



- ① ITEM 411 STABILIZED CRUSHED AGGREGATE, 4"
- ② ITEM 304 AGGREGATE BASE, 8"
- ③ ITEM 204 SUBGRADE COMPACTION

TYPICAL CONCRETE PAVEMENT SECTION



- ① ITEM 452 NON-REINFORCED CONCRETE PAVEMENT 8"
- ② ITEM 304 AGGREGATE BASE, 6"
- ③ ITEM 204 SUBGRADE COMPACTION

EASEMENT REFERENCE

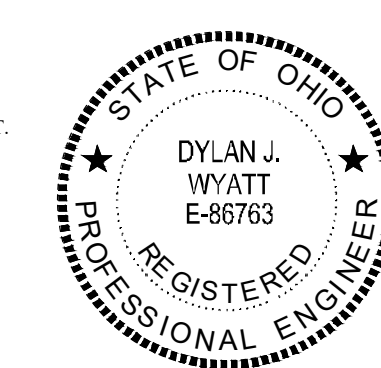
City's No.	County Recorder		Grantor
	Volume	Page	

REVISIONS

No.	Description	Approval	Date
1	REVISE UTILITY CONNECTIONS	DJW	2/16/24
	AS BUILT		

Plans Prepared By :

Maakeever & Associates, Inc.
 P.O. BOX 325, 1810 E. MANSFIELD ST.
 BUCYRUS, OHIO 44820
 Phone: (419) 562-7757 Fax: (419) 562-4717



DYLAN J. WYATT
 E-86763
 Ohio Reg. No. Date

GENERAL NOTES

ENG. FILE NO. _____
 IMP. ACCT. NO. _____
 CONTRACT NO. _____
 COMPLETION DATE _____
 CONTRACTOR _____

OMNESS DESIGN INC.
 MARION CO. WWTP GARAGE
 2160 RICHLAND RD

Scale : Horiz. = AS NOTED
 Vert. = AS NOTED
 Original Sheet Size = 24"x36"
 Date : 2-6-2024
 Sheet No. : 2 OF 10
 S:\2023\202 Dwg. No. : 23-202-001



LEGEND

FOUND	SET	DESCRIPTION
○	●	3/4" IRON PIPE, UNLESS NOTED
○	●	5/8" IRON PIN, UNLESS NOTED
○	●	SURVEY NAIL
△	▲	RAIL ROAD SPIKE
○	●	MAG SPIKE
□	■	MONUMENT BOX
⊥	⊥	TBAR
⊥	⊥	BOLLARD
⊥	⊥	CATCH BASIN
⊥	⊥	CURB INLET
⊥	⊥	STORM MANHOLE
⊥	⊥	TILE DROP
⊥	⊥	CLEAN OUT
⊥	⊥	SANITARY MANHOLE
⊥	⊥	UNKNOWN MANHOLE
⊥	⊥	FIRE HYDRANT
⊥	⊥	WATER METER
⊥	⊥	WATER VALVE
⊥	⊥	WATER SERVICE VALVE
⊥	⊥	WELL
⊥	⊥	MONITORING WELL
⊥	⊥	ELECTRIC METER
⊥	⊥	ELECTRIC PULL BOX
⊥	⊥	ELECTRIC TRANSFORMER
⊥	⊥	LIGHT PULL BOX
⊥	⊥	YARD LITE
⊥	⊥	FLAG POLE
⊥	⊥	POWER POLE
⊥	⊥	POWER/TELEPHONE POLE
⊥	⊥	LIGHT POLE
⊥	⊥	POWER/CABLE POLE
⊥	⊥	POWER/TELEPHONE/CABLE POLE
⊥	⊥	POWER/LIGHT POLE
⊥	⊥	TELEPHONE POLE
⊥	⊥	UNKNOWN POLE
⊥	⊥	YARD HYDRANT
⊥	⊥	GUY WIRE
⊥	⊥	SIGN
⊥	⊥	CABLE BOX
⊥	⊥	TELEPHONE MANHOLE
⊥	⊥	TELEPHONE BOX
⊥	⊥	TELEPHONE LINE MARKER
⊥	⊥	GAS METER
⊥	⊥	GAS MARKER
⊥	⊥	GAS VALVE
⊥	⊥	GAS SERVICE VALVE
⊥	⊥	MAIL BOX
⊥	⊥	SOIL BORING
⊥	⊥	TREE
⊥	⊥	EVERGREEN TREE
⊥	⊥	SHRUB
⊥	⊥	STUMP
— SAN —	— SAN —	SANITARY SEWER
— STM —	— STM —	STORM SEWER
— E —	— E —	ELECTRIC LINE
— W —	— W —	WATER LINE
— T —	— T —	TELEPHONE LINE
— CATV —	— CATV —	CABLE TV LINE
— GAS —	— GAS —	GAS LINE
— X —	— X —	FENCE
— TREE —	— TREE —	TREE LINE

NOTES:

PER MARION COUNTY SANITARY ENGINEER INSTRUCTIONS, PROPOSED STORM WATER CONDUIT AND STRUCTURES SHALL BE ADDED AS NEEDED WITH DIRECT OUTLET TO GRAVE CREEK. NO STORM WATER DETENTION BE REQUIRED.

EXISTING TOPOGRAPHY PROVIDED BY ACAD FILES PROVIDED TO MAKEEVER & ASSOCIATES BY MARION COUNTY SANITARY ENGINEER.

BENCHMARKS

BM1 - CHISELED SQUARE ON THE WEST SIDE OF THE GEAR SCREW UNIT. ELEVATION - 973.27

EASEMENT REFERENCE		
City's No.	County Recorder Volume	Page

REVISIONS			
No.	Description	Approval	Date
1	REVISE UTILITY CONNECTIONS	DJW	2/16/24
	AS BUILT		

Plans Prepared By :

Makeever & Associates, Inc.
 P.O. BOX 325, 1810 E. MANSFIELD ST.
 BUCYRUS, OHIO 44820
 Phone: (419) 562-7757 Fax: (419) 562-4717

DYLAN J. WYATT

E-86763
Ohio Reg. No. _____ Date _____

STATE OF OHIO
 REGISTERED PROFESSIONAL ENGINEER
 DYLAN J. WYATT
 E-86763

EXISTING SITE

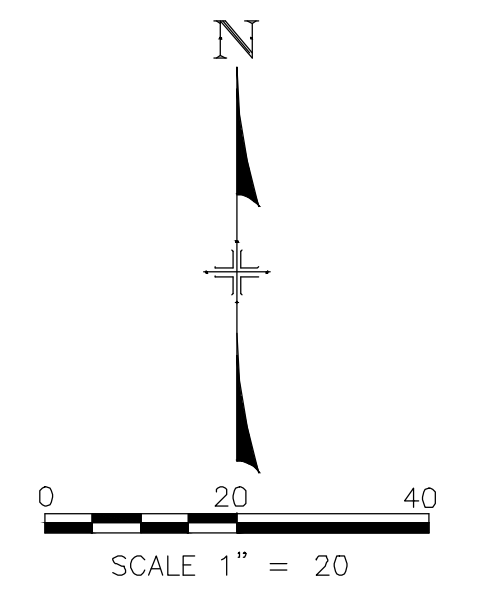
ENG. FILE NO. _____
 IMP. ACCT. NO. _____
 CONTRACT NO. _____
 COMPLETION DATE _____
 CONTRACTOR _____

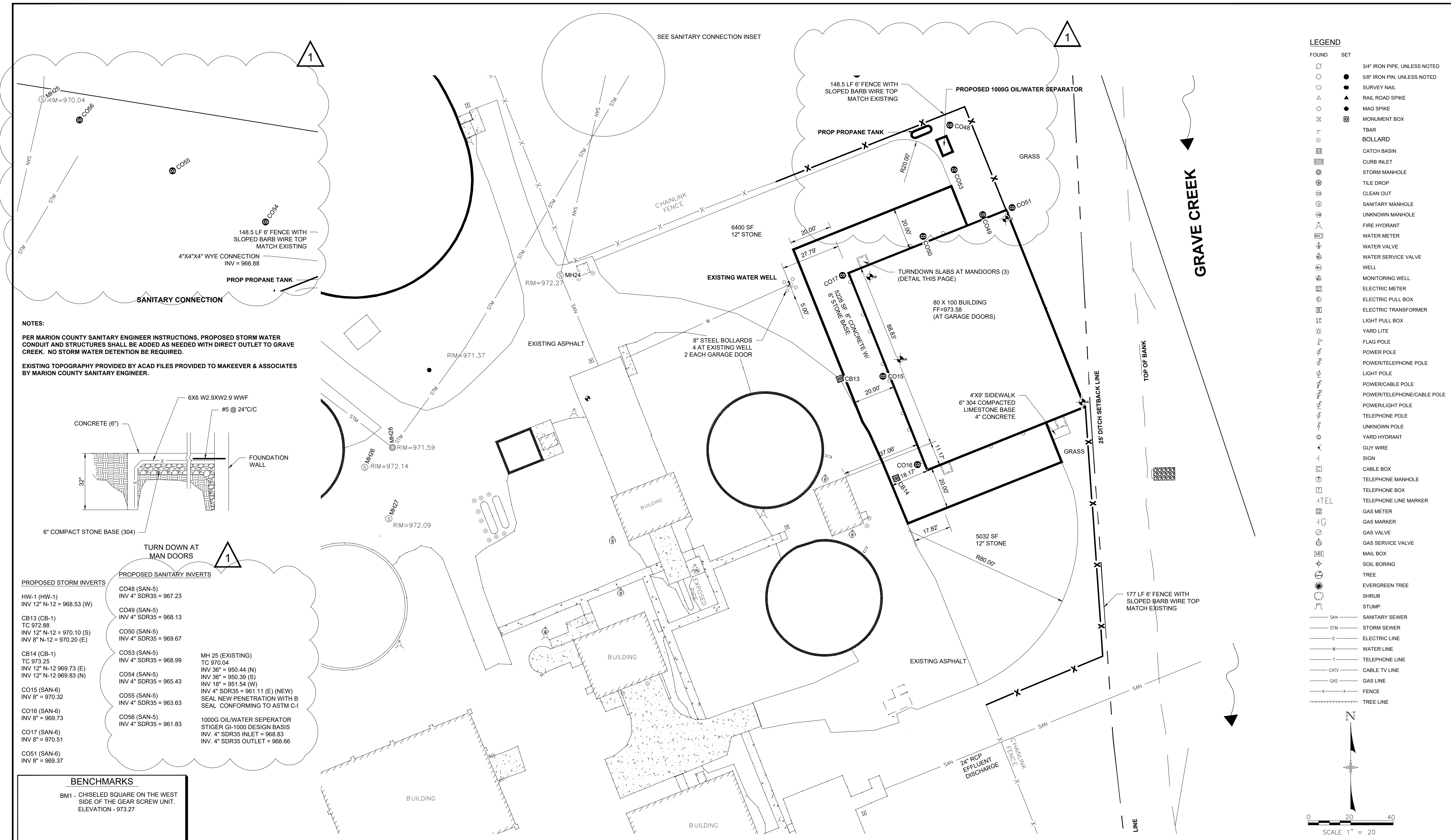
OMNESS DESIGN INC.
 MARION CO. WWTP GARAGE
 2160 RICHLAND RD

Scale : Horiz. = AS NOTED
 Vert. = AS NOTED

Original Sheet Size = 24"x36"
 Date : 2-6-2024

Sheet No. : 3 OF 10
 S:\2023\202 Dwg. No. : 23-202-001

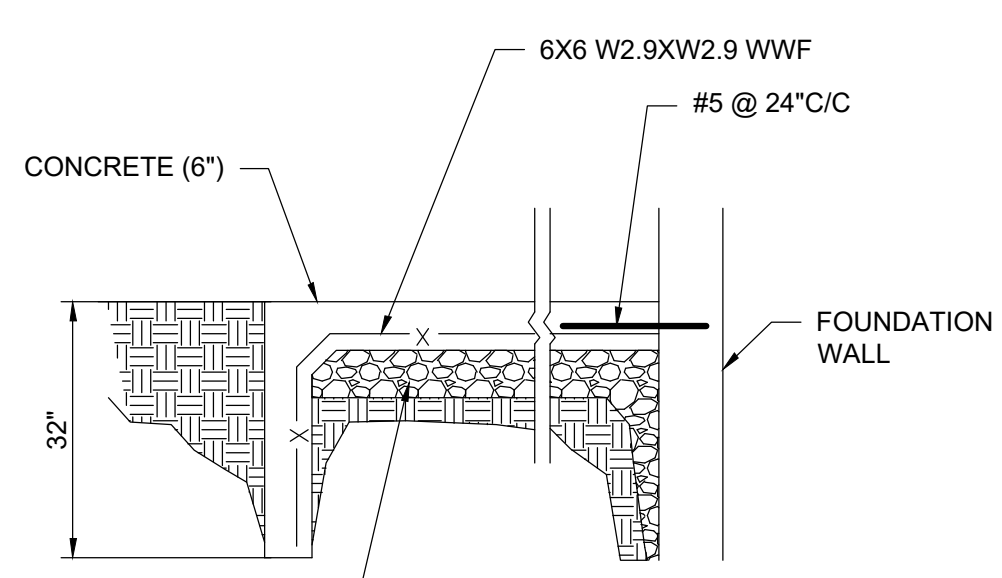




LEGEND

FOUND	SET	DESCRIPTION
○	●	3/4" IRON PIPE, UNLESS NOTED
○	●	5/8" IRON PIN, UNLESS NOTED
○	●	SURVEY NAIL
○	●	RAIL ROAD SPIKE
○	●	MAG SPIKE
○	●	MONUMENT BOX
○	○	TBAR
○	○	BOLLARD
○	○	CATCH BASIN
○	○	CURB INLET
○	○	STORM MANHOLE
○	○	TILE DROP
○	○	CLEAN OUT
○	○	SANITARY MANHOLE
○	○	UNKNOWN MANHOLE
○	○	FIRE HYDRANT
○	○	WATER METER
○	○	WATER VALVE
○	○	WATER SERVICE VALVE
○	○	WELL
○	○	MONITORING WELL
○	○	ELECTRIC METER
○	○	ELECTRIC PULL BOX
○	○	ELECTRIC TRANSFORMER
○	○	LIGHT PULL BOX
○	○	YARD LITE
○	○	FLAG POLE
○	○	POWER POLE
○	○	POWER/TELEPHONE POLE
○	○	LIGHT POLE
○	○	POWER/CABLE POLE
○	○	POWER/TELEPHONE/CABLE POLE
○	○	POWER/LIGHT POLE
○	○	TELEPHONE POLE
○	○	UNKNOWN POLE
○	○	YARD HYDRANT
○	○	GUY WIRE
○	○	SIGN
○	○	CABLE BOX
○	○	TELEPHONE MANHOLE
○	○	TELEPHONE BOX
○	○	TELEPHONE LINE MARKER
○	○	GAS METER
○	○	GAS MARKER
○	○	GAS VALVE
○	○	GAS SERVICE VALVE
○	○	MAIL BOX
○	○	SOIL BORING
○	○	TREE
○	○	EVERGREEN TREE
○	○	SHRUB
○	○	STUMP
○	○	SAN — SANITARY SEWER
○	○	STM — STORM SEWER
○	○	E — ELECTRIC LINE
○	○	W — WATER LINE
○	○	T — TELEPHONE LINE
○	○	CATV — CABLE TV LINE
○	○	GAS — GAS LINE
○	○	X — FENCE
○	○	— TREE LINE

NOTES:
 PER MARION COUNTY SANITARY ENGINEER INSTRUCTIONS, PROPOSED STORM WATER CONDUIT AND STRUCTURES SHALL BE ADDED AS NEEDED WITH DIRECT OUTLET TO GRAVE CREEK. NO STORM WATER DETENTION BE REQUIRED.
 EXISTING TOPOGRAPHY PROVIDED BY ACAD FILES PROVIDED TO MAKEEVER & ASSOCIATES BY MARION COUNTY SANITARY ENGINEER.



TURN DOWN AT MAN DOORS

PROPOSED STORM INVERTS	PROPOSED SANITARY INVERTS	EXISTING/NEW MANHOLES
HW-1 (HW-1) INV 12" N-12 = 968.53 (W)	CO48 (SAN-5) INV 4" SDR35 = 967.23	MH 25 (EXISTING) TC 970.04
CB13 (CB-1) TC 972.88 INV 12" N-12 = 970.10 (S) INV 8" N-12 = 970.20 (E)	CO49 (SAN-5) INV 4" SDR35 = 968.13	INV 36" = 950.44 (N) INV 36" = 950.39 (S) INV 18" = 951.54 (W)
CB14 (CB-1) TC 973.25 INV 12" N-12 969.73 (E) INV 12" N-12 969.83 (N)	CO50 (SAN-5) INV 4" SDR35 = 969.67	INV 4" SDR35 = 961.11 (E) (NEW) SEAL NEW PENETRATION WITH B SEAL CONFORMING TO ASTM C-1
CO15 (SAN-6) INV 8" = 970.32	CO53 (SAN-5) INV 4" SDR35 = 968.99	1000G OIL/WATER SEPARATOR STIGER G1-1000 DESIGN BASIS INV. 4" SDR35 INLET = 968.83 INV. 4" SDR35 OUTLET = 968.66
CO16 (SAN-6) INV 8" = 969.73	CO54 (SAN-5) INV 4" SDR35 = 965.43	
CO17 (SAN-6) INV 8" = 970.51	CO55 (SAN-5) INV 4" SDR35 = 963.63	
CO51 (SAN-6) INV 8" = 969.37	CO56 (SAN-5) INV 4" SDR35 = 961.83	

BENCHMARKS

BM1 - CHISELED SQUARE ON THE WEST SIDE OF THE GEAR SCREW UNIT. ELEVATION - 973.27
--

EASEMENT REFERENCE				REVISIONS			
City's No.	County Recorder	Volume	Page	No.	Description	Approval	Date
				1	REVISE UTILITY CONNECTIONS	DJW	2/16/24
					AS BUILT		

Plans Prepared By :

Makeever & Associates, Inc.
 P.O. BOX 325, 1810 E. MANSFIELD ST.
 BUCYRUS, OHIO 44820
 Phone: (419) 562-7757 Fax: (419) 562-4717

DYLAN J. WYATT
 E-86763
 Ohio Reg. No. _____ Date _____

STATE OF OHIO
 DYLAN J. WYATT
 E-86763
 REGISTERED PROFESSIONAL ENGINEER

SCHEMATIC LAYOUT

ENG. FILE NO. _____
 IMP. ACCT. NO. _____
 CONTRACT NO. _____
 COMPLETION DATE _____
 CONTRACTOR _____

OMNESS DESIGN INC.
 MARION CO. WWTP GARAGE
 2160 RICHLAND RD

Scale : Horiz. = AS NOTED
 Vert. = AS NOTED

Original Sheet Size = 24"x36"
 Date : 2-6-2024

Sheet No. : 4 OF 10
 S:\2023\202 Dwg. No. : 23-202-001

PROPOSED STORM INVERTS

HW-1 (HW-1)
INV 12" N-12 = 968.53 (W)

CB13 (CB-1)
TC 972.88
INV 12" N-12 = 970.10 (S)
INV 8" N-12 = 970.20 (E)

CB14 (CB-1)
TC 973.25
INV 12" N-12 969.73 (E)
INV 12" N-12 969.83 (N)

CO15 (SAN-6)
INV 8" = 970.32

CO16 (SAN-6)
INV 8" = 969.73

CO17 (SAN-6)
INV 8" = 970.51

CO51 (SAN-6)
INV 8" = 969.37

PROPOSED SANITARY INVERTS

CO48 (SAN-5)
INV 4" SDR35 = 967.23

CO49 (SAN-5)
INV 4" SDR35 = 968.13

CO50 (SAN-5)
INV 4" SDR35 = 969.67

CO53 (SAN-5)
INV 4" SDR35 = 968.99

CO54 (SAN-5)
INV 4" SDR35 = 965.43

CO55 (SAN-5)
INV 4" SDR35 = 963.63

CO56 (SAN-5)
INV 4" SDR35 = 961.83

MH 25 (EXISTING)
TC 970.04
INV 36" = 950.44 (N)
INV 36" = 950.39 (S)
INV 18" = 951.54 (W)
INV 4" SDR35 = 961.11 (E) (NEW)
SEAL NEW PENETRATION WITH BOOT
SEAL CONFORMING TO ASTM C-923

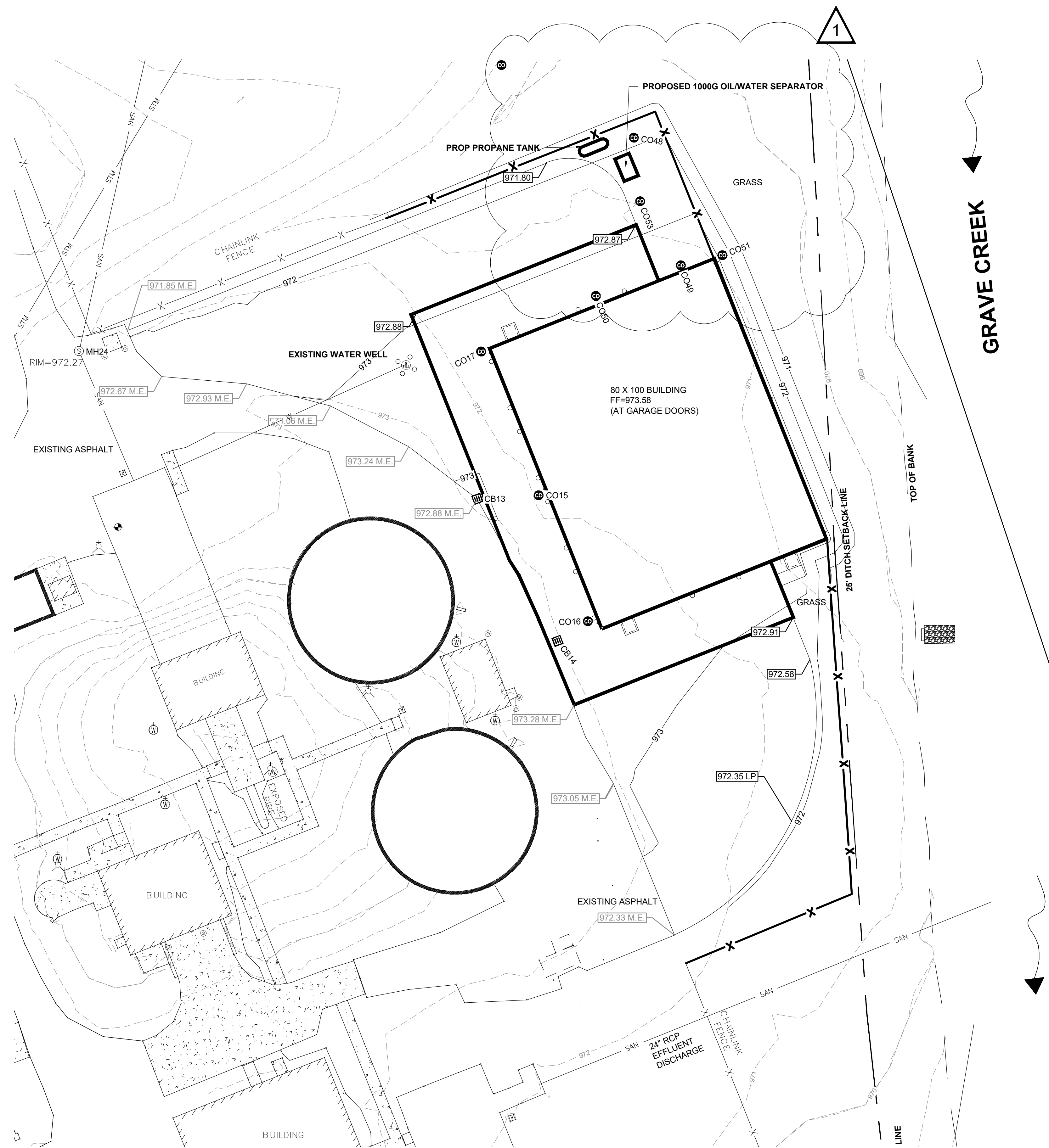
1000G OIL/WATER SEPERATOR
STIGER GI-1000 DESIGN BASIS
INV. 4" SDR35 INLET = 968.83
INV. 4" SDR35 OUTLET = 968.66

Cut/Fill Summary

Name	Cut	Fill	Net
FINAL GRADE_to_original_less_9in_topsoil	0.00 Cu. Yd.	2143 Cu. Yd.	2143 Cu. Yd.<Fill>
TOPSOIL	879.50 Cu. Yd.	0.00 Cu. Yd.	879.50 Cu. Yd.<Cut>
STONE UNDER BUILDING (12")	0 Cu. Yd.	296 Cu. Yd.	296 Cu. Yd.<Fill>
STONE DRIVE & PARKING (12")	0 Cu. Yd.	427 Cu. Yd.	427 Cu. Yd.<Fill>
CONCRETE PAVEMENT SECTION (8" CONCRETE, 6" STONE) (14")	0 Cu. Yd.	222 Cu. Yd.	222 Cu. Yd.<Fill>
STRUCTURAL FILL REQUIRED FROM OFFSITE	0 Cu. Yd.	1198 Cu. Yd.	1198 Cu. Yd.<Fill>

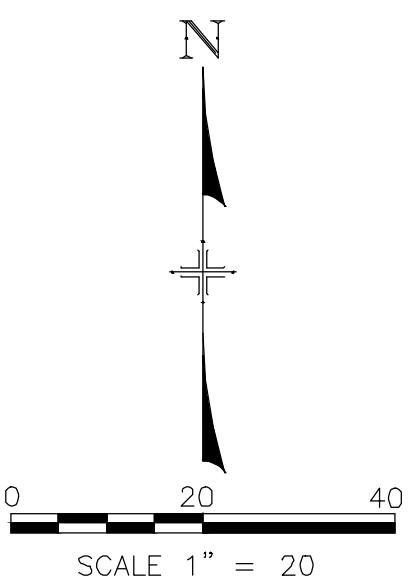
BENCHMARKS

BM1 - CHISELED SQUARE ON THE WEST SIDE OF THE GEAR SCREW UNIT. ELEVATION - 973.27



LEGEND

- | FOUND | SET | |
|-------|-----|------------------------------|
| ○ | ● | 3/4" IRON PIPE, UNLESS NOTED |
| ○ | ● | 5/8" IRON PIN, UNLESS NOTED |
| ○ | ● | SURVEY NAIL |
| △ | ▲ | RAIL ROAD SPIKE |
| ○ | ● | MAG SPIKE |
| □ | ■ | MONUMENT BOX |
| — | — | TBAR |
| — | — | BOLLARD |
| — | — | CATCH BASIN |
| — | — | CURB INLET |
| — | — | STORM MANHOLE |
| — | — | TILE DROP |
| — | — | CLEAN OUT |
| — | — | SANITARY MANHOLE |
| — | — | UNKNOWN MANHOLE |
| — | — | FIRE HYDRANT |
| — | — | WATER METER |
| — | — | WATER VALVE |
| — | — | WATER SERVICE VALVE |
| — | — | WELL |
| — | — | MONITORING WELL |
| — | — | ELECTRIC METER |
| — | — | ELECTRIC PULL BOX |
| — | — | ELECTRIC TRANSFORMER |
| — | — | LIGHT PULL BOX |
| — | — | YARD LITE |
| — | — | FLAG POLE |
| — | — | POWER POLE |
| — | — | POWER/TELEPHONE POLE |
| — | — | LIGHT POLE |
| — | — | POWER/CABLE POLE |
| — | — | POWER/TELEPHONE/CABLE POLE |
| — | — | POWER/LIGHT POLE |
| — | — | TELEPHONE POLE |
| — | — | UNKNOWN POLE |
| — | — | YARD HYDRANT |
| — | — | GUY WIRE |
| — | — | SIGN |
| — | — | CABLE BOX |
| — | — | TELEPHONE MANHOLE |
| — | — | TELEPHONE BOX |
| — | — | TELEPHONE LINE MARKER |
| — | — | GAS METER |
| — | — | GAS MARKER |
| — | — | GAS VALVE |
| — | — | GAS SERVICE VALVE |
| — | — | MAIL BOX |
| — | — | SOIL BORING |
| — | — | TREE |
| — | — | EVERGREEN TREE |
| — | — | SHRUB |
| — | — | STUMP |
| — | — | SAN — SANITARY SEWER |
| — | — | STM — STORM SEWER |
| — | — | E — ELECTRIC LINE |
| — | — | W — WATER LINE |
| — | — | T — TELEPHONE LINE |
| — | — | CATV — CABLE TV LINE |
| — | — | GAS — GAS LINE |
| — | — | X — FENCE |
| — | — | — — TREE LINE |



EASEMENT REFERENCE			REVISIONS			
City's No.	County Recorder	Grantor	No.	Description	Approval	Date
	Volume	Page	1	REVISE UTILITY CONNECTIONS	DJW	2/16/24
			AS BUILT			

Plans Prepared By :

DYLAN J. WYATT
E-86763
Ohio Reg. No. _____ Date _____

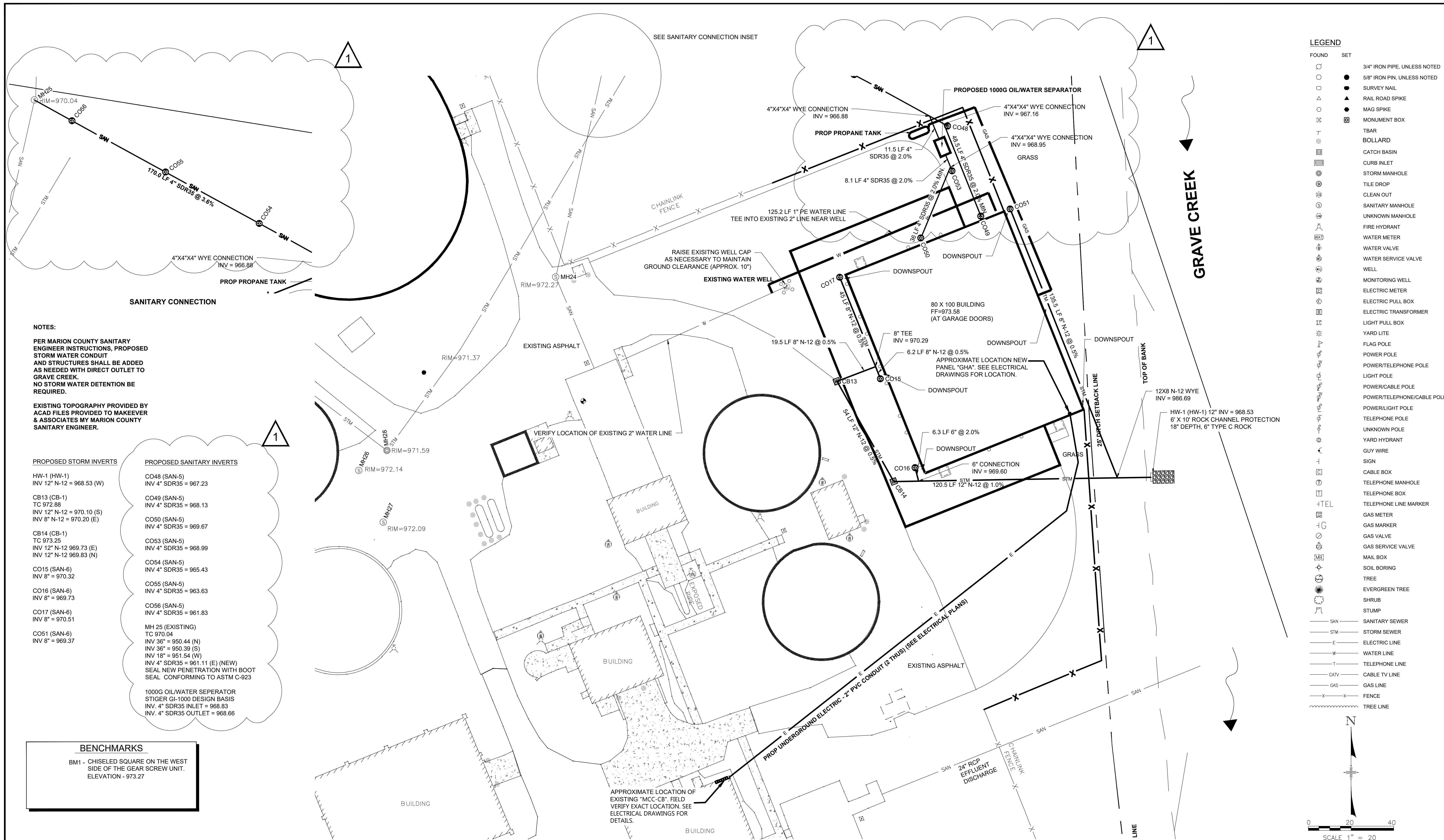
GRADING PLAN

ENG. FILE NO. _____
 IMP. ACCT. NO. _____
 CONTRACT NO. _____
 COMPLETION DATE _____
 CONTRACTOR _____

OMNESS DESIGN INC.
 MARION CO. WWTP GARAGE
 2160 RICHLAND RD

Scale : Horiz. = AS NOTED
 Vert. = AS NOTED
 Original Sheet Size = 24"x36"
 Date : 2-6-2024

Sheet No. : 5 OF 10
 S:\2023\202
 Dwg. No. : 23-202-001



LEGEND

FOUND	SET	DESCRIPTION
○	●	3/4" IRON PIPE, UNLESS NOTED
○	●	5/8" IRON PIN, UNLESS NOTED
○	●	SURVEY NAIL
△	▲	RAIL ROAD SPIKE
○	●	MAG SPIKE
□	■	MONUMENT BOX
—	—	TBAR
—	—	BOLLARD
—	—	CATCH BASIN
—	—	CURB INLET
—	—	STORM MANHOLE
—	—	TILE DROP
—	—	CLEAN OUT
—	—	SANITARY MANHOLE
—	—	UNKNOWN MANHOLE
—	—	FIRE HYDRANT
—	—	WATER METER
—	—	WATER VALVE
—	—	WATER SERVICE VALVE
—	—	WELL
—	—	MONITORING WELL
—	—	ELECTRIC METER
—	—	ELECTRIC PULL BOX
—	—	ELECTRIC TRANSFORMER
—	—	LIGHT PULL BOX
—	—	YARD LITE
—	—	FLAG POLE
—	—	POWER POLE
—	—	POWER/TELEPHONE POLE
—	—	LIGHT POLE
—	—	POWER/CABLE POLE
—	—	POWER/TELEPHONE/CABLE POLE
—	—	POWER/LIGHT POLE
—	—	TELEPHONE POLE
—	—	UNKNOWN POLE
—	—	YARD HYDRANT
—	—	GUY WIRE
—	—	SIGN
—	—	CABLE BOX
—	—	TELEPHONE MANHOLE
—	—	TELEPHONE BOX
—	—	TELEPHONE LINE MARKER
—	—	GAS METER
—	—	GAS MARKER
—	—	GAS VALVE
—	—	GAS SERVICE VALVE
—	—	MAIL BOX
—	—	SOIL BORING
—	—	TREE
—	—	EVERGREEN TREE
—	—	SHRUB
—	—	STUMP
—	—	SAN — SANITARY SEWER
—	—	STM — STORM SEWER
—	—	E — ELECTRIC LINE
—	—	W — WATER LINE
—	—	T — TELEPHONE LINE
—	—	CATV — CABLE TV LINE
—	—	GAS — GAS LINE
—	—	X — FENCE
—	—	~ ~ ~ — TREE LINE

NOTES:

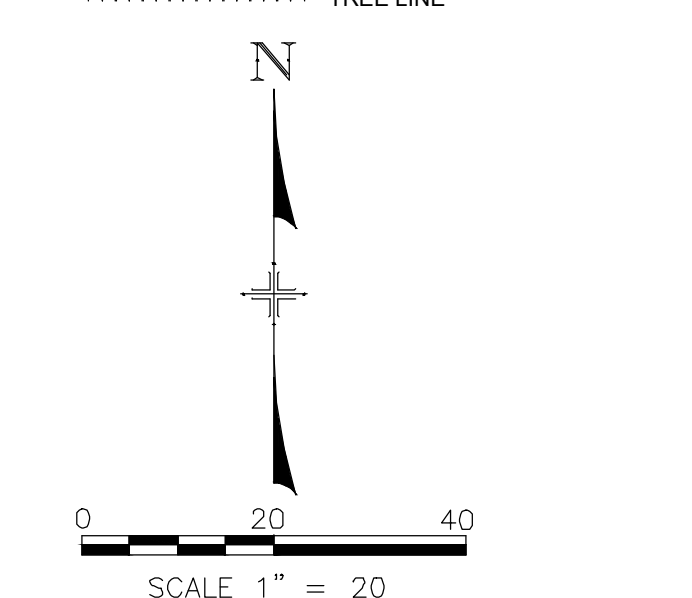
PER MARION COUNTY SANITARY ENGINEER INSTRUCTIONS, PROPOSED STORM WATER CONDUIT AND STRUCTURES SHALL BE ADDED AS NEEDED WITH DIRECT OUTLET TO GRAVE CREEK. NO STORM WATER DETENTION BE REQUIRED.

EXISTING TOPOGRAPHY PROVIDED BY ACAD FILES PROVIDED TO MAKEEVER & ASSOCIATES BY MARION COUNTY SANITARY ENGINEER.

PROPOSED STORM INVERTS	PROPOSED SANITARY INVERTS
HW-1 (HW-1) INV 12" N-12 = 968.53 (W)	CO48 (SAN-5) INV 4" SDR35 = 967.23
CB13 (CB-1) TC 972.88 INV 12" N-12 = 970.10 (S) INV 8" N-12 = 970.20 (E)	CO49 (SAN-5) INV 4" SDR35 = 968.13
CB14 (CB-1) TC 973.25 INV 12" N-12 969.73 (E) INV 12" N-12 969.83 (N)	CO50 (SAN-5) INV 4" SDR35 = 969.67
CO15 (SAN-6) INV 8" = 970.32	CO53 (SAN-5) INV 4" SDR35 = 968.99
CO16 (SAN-6) INV 8" = 969.73	CO54 (SAN-5) INV 4" SDR35 = 965.43
CO17 (SAN-6) INV 8" = 970.51	CO55 (SAN-5) INV 4" SDR35 = 963.63
CO51 (SAN-6) INV 8" = 969.37	CO56 (SAN-5) INV 4" SDR35 = 961.83
	MH 25 (EXISTING) TC 970.04 INV 36" = 950.44 (N) INV 36" = 950.39 (S) INV 18" = 951.54 (W) INV 4" SDR35 = 961.11 (E) (NEW) SEAL NEW PENETRATION WITH BOOT SEAL CONFORMING TO ASTM C-923
	1000G OIL/WATER SEPARATOR STIGER GI-1000 DESIGN BASIS INV. 4" SDR35 INLET = 968.83 INV. 4" SDR35 OUTLET = 968.66

BENCHMARKS

BM1 - CHISELED SQUARE ON THE WEST SIDE OF THE GEAR SCREW UNIT. ELEVATION - 973.27



EASEMENT REFERENCE				REVISIONS			
City's No.	County Recorder	Volume	Page	No.	Description	Approval	Date
				1	REVISE UTILITY CONNECTIONS	DJW	2/16/24
					AS BUILT		

Plans Prepared By :

Makeever & Associates, Inc.

P.O. BOX 325, 1810 E. MANSFIELD ST.
BUCYRUS, OHIO 44820
Phone: (419) 562-7757 Fax: (419) 562-4717

DYLAN J. WYATT

E-86763

Ohio Reg. No. _____ Date _____

STATE OF OHIO REGISTERED PROFESSIONAL ENGINEER DYLAN J. WYATT E-86763

UTILITY PLAN

ENG. FILE NO. _____

IMP. ACCT. NO. _____

CONTRACT NO. _____

COMPLETION DATE _____

CONTRACTOR _____

OMNESS DESIGN INC.

MARION CO. WWTP GARAGE
2160 RICHLAND RD

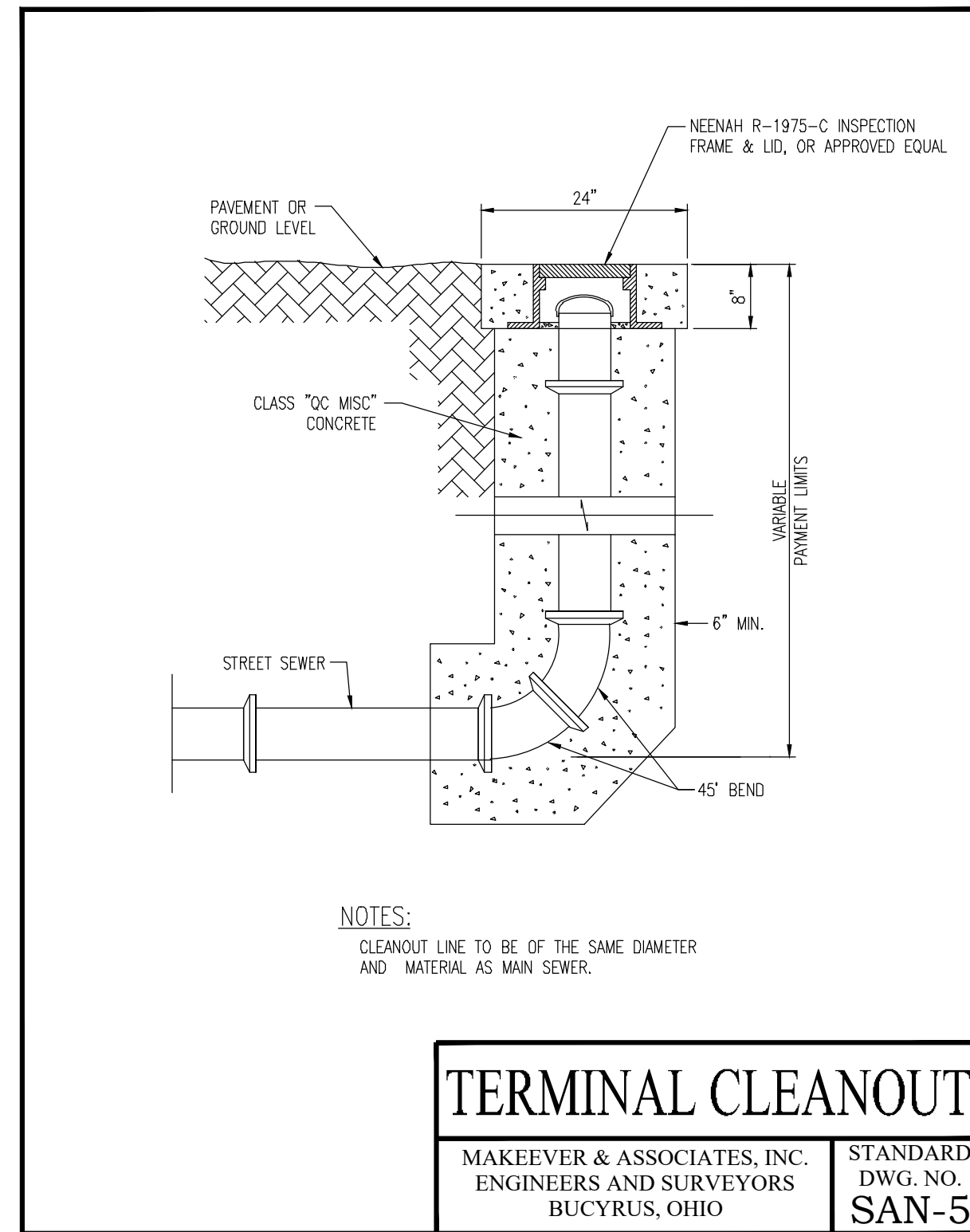
Scale : Horiz. = AS NOTED
Vert. = AS NOTED

Original Sheet Size = 24"x36"

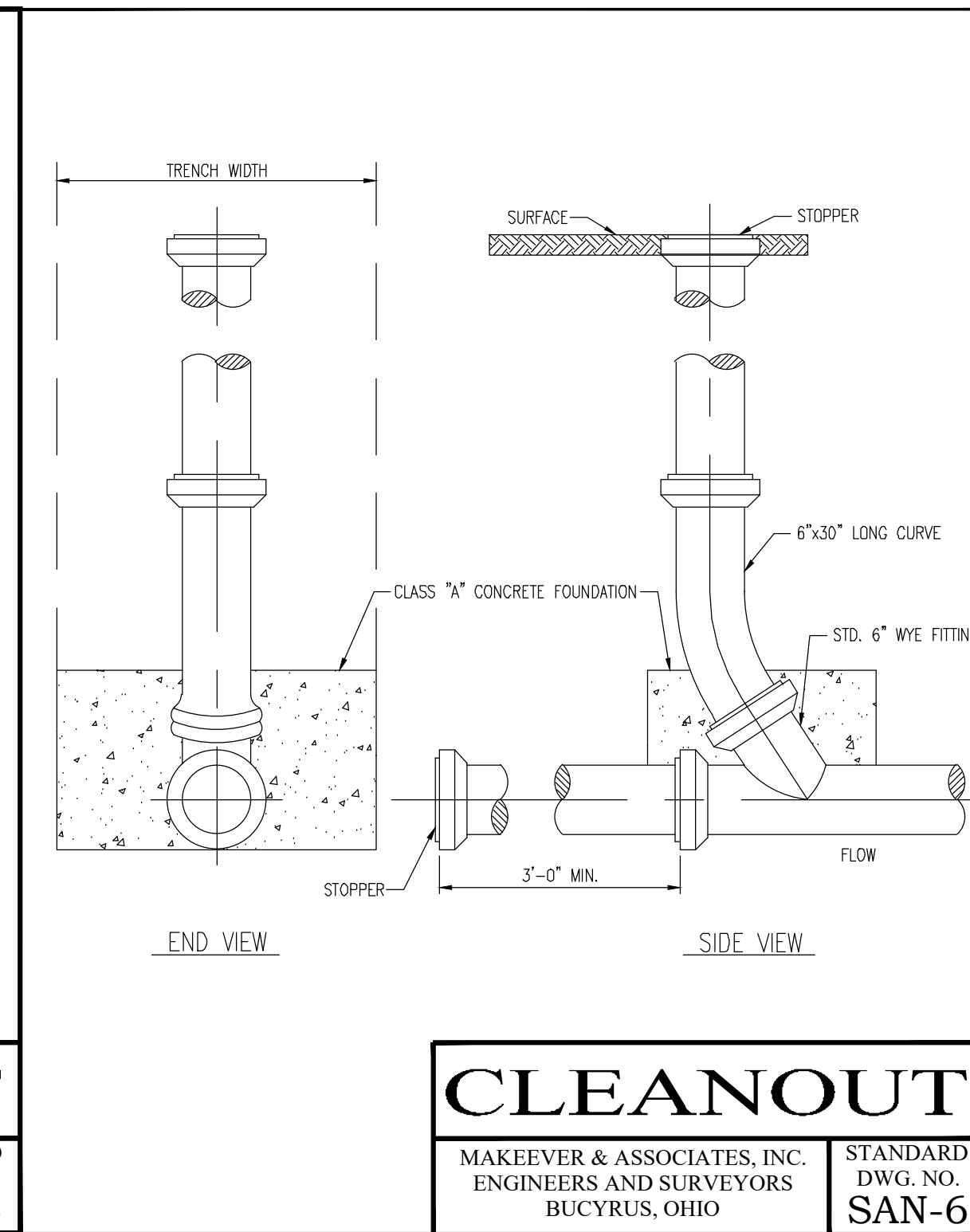
Date : 2-6-2024

Sheet No. : 6 OF 10

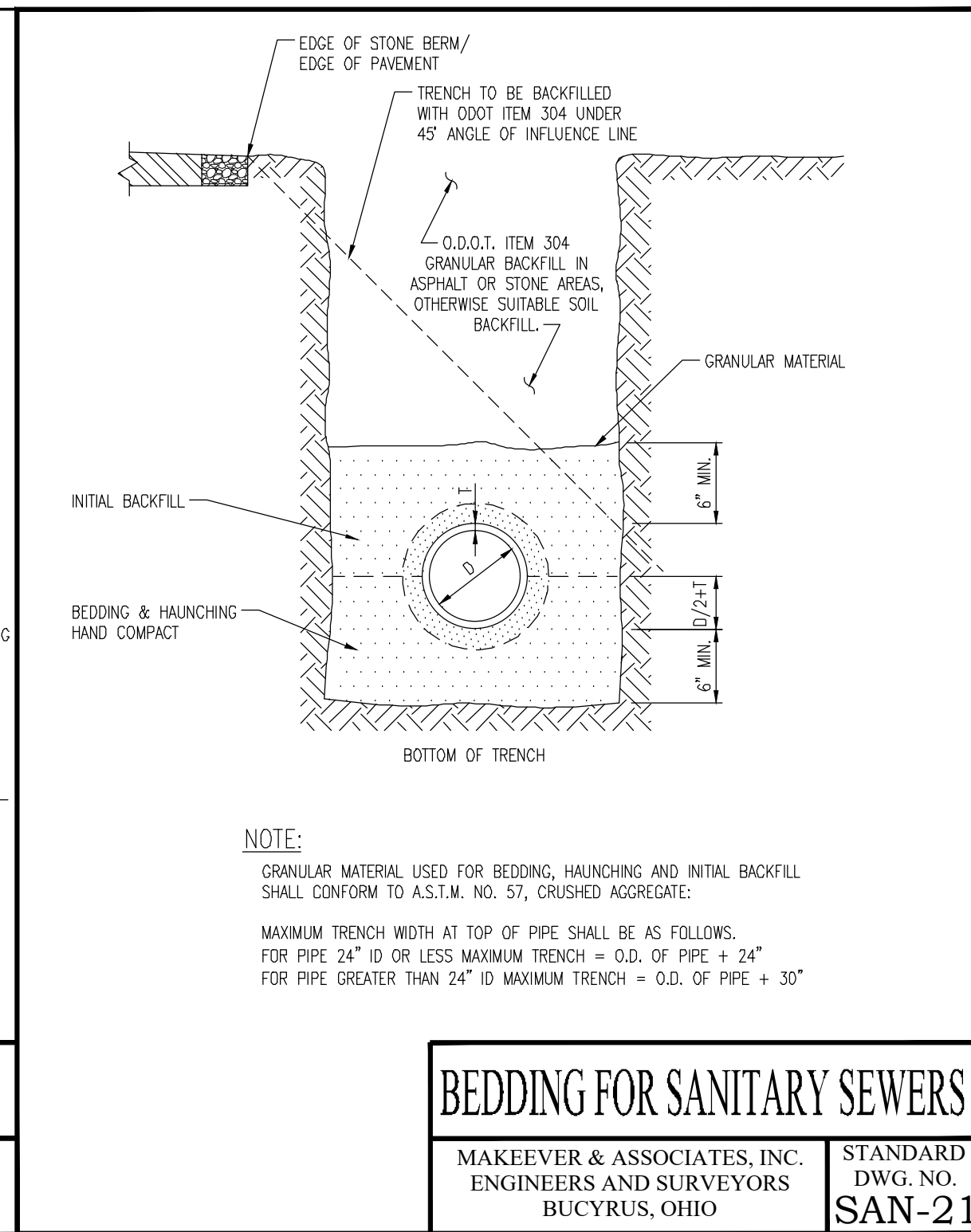
S:\2023\202 Dwg. No. : 23-202-001



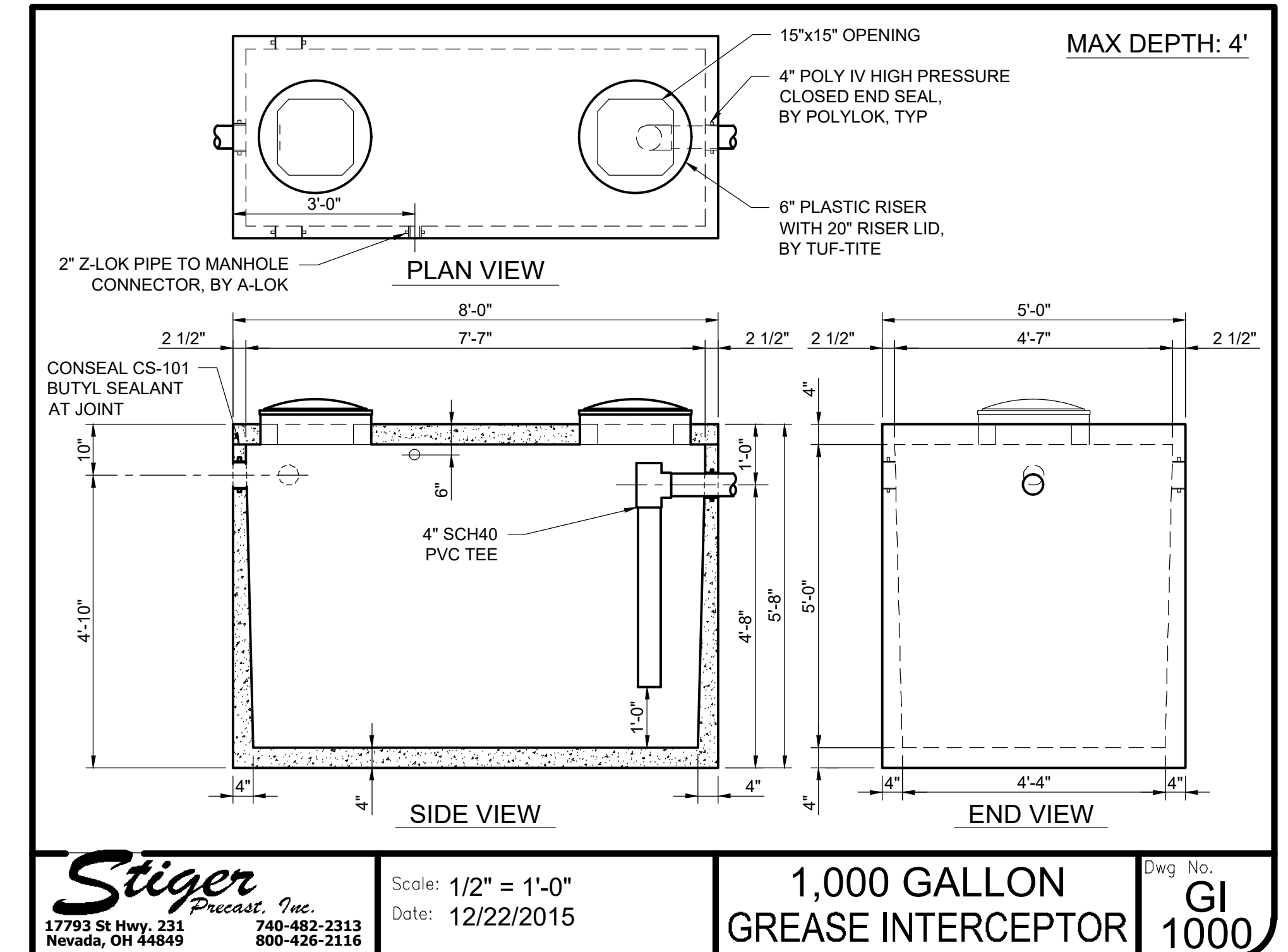
TERMINAL CLEANOUT
 MAKEEVER & ASSOCIATES, INC.
 ENGINEERS AND SURVEYORS
 BUCYRUS, OHIO
 STANDARD DWG. NO. **SAN-5**



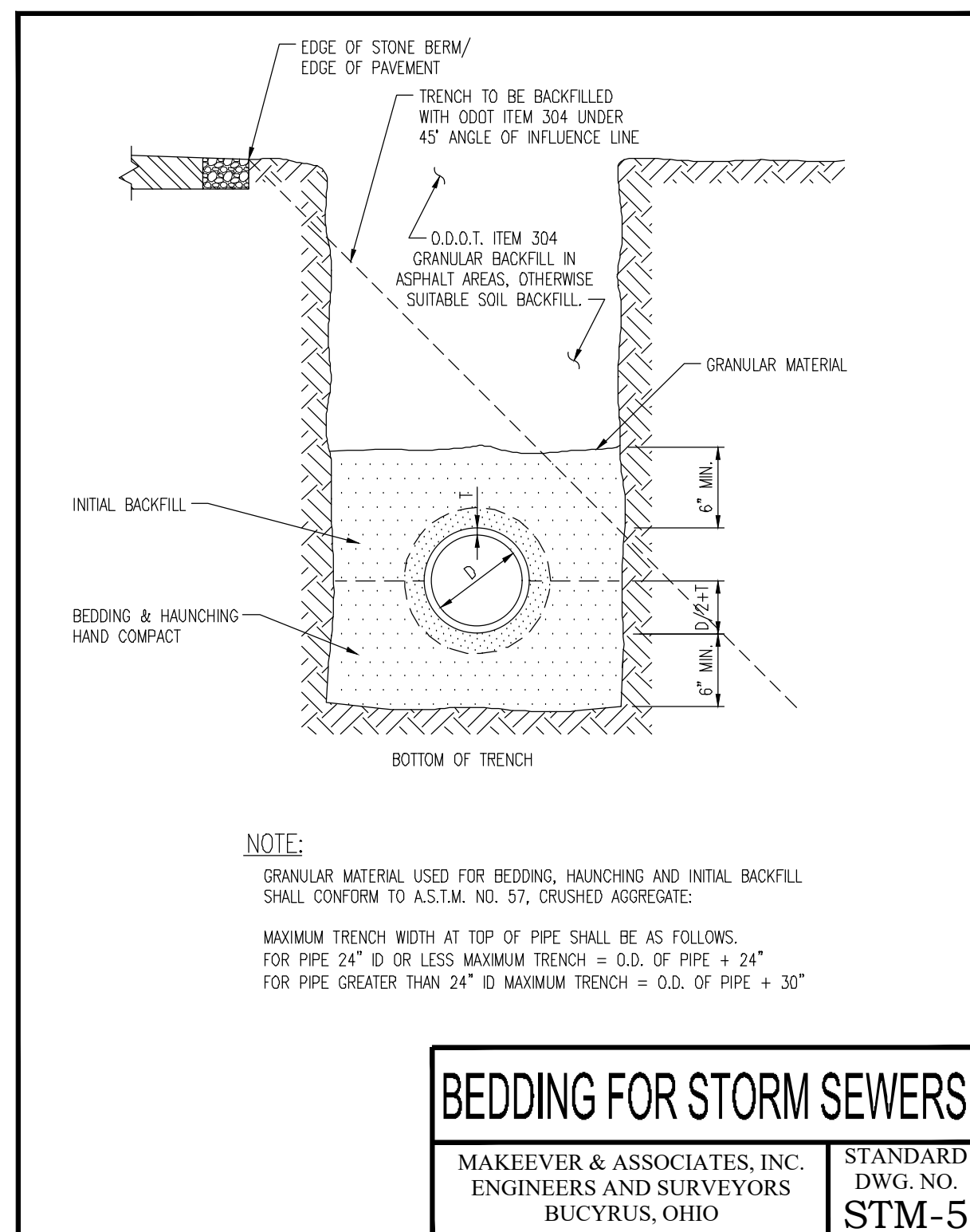
CLEANOUT
 MAKEEVER & ASSOCIATES, INC.
 ENGINEERS AND SURVEYORS
 BUCYRUS, OHIO
 STANDARD DWG. NO. **SAN-6**



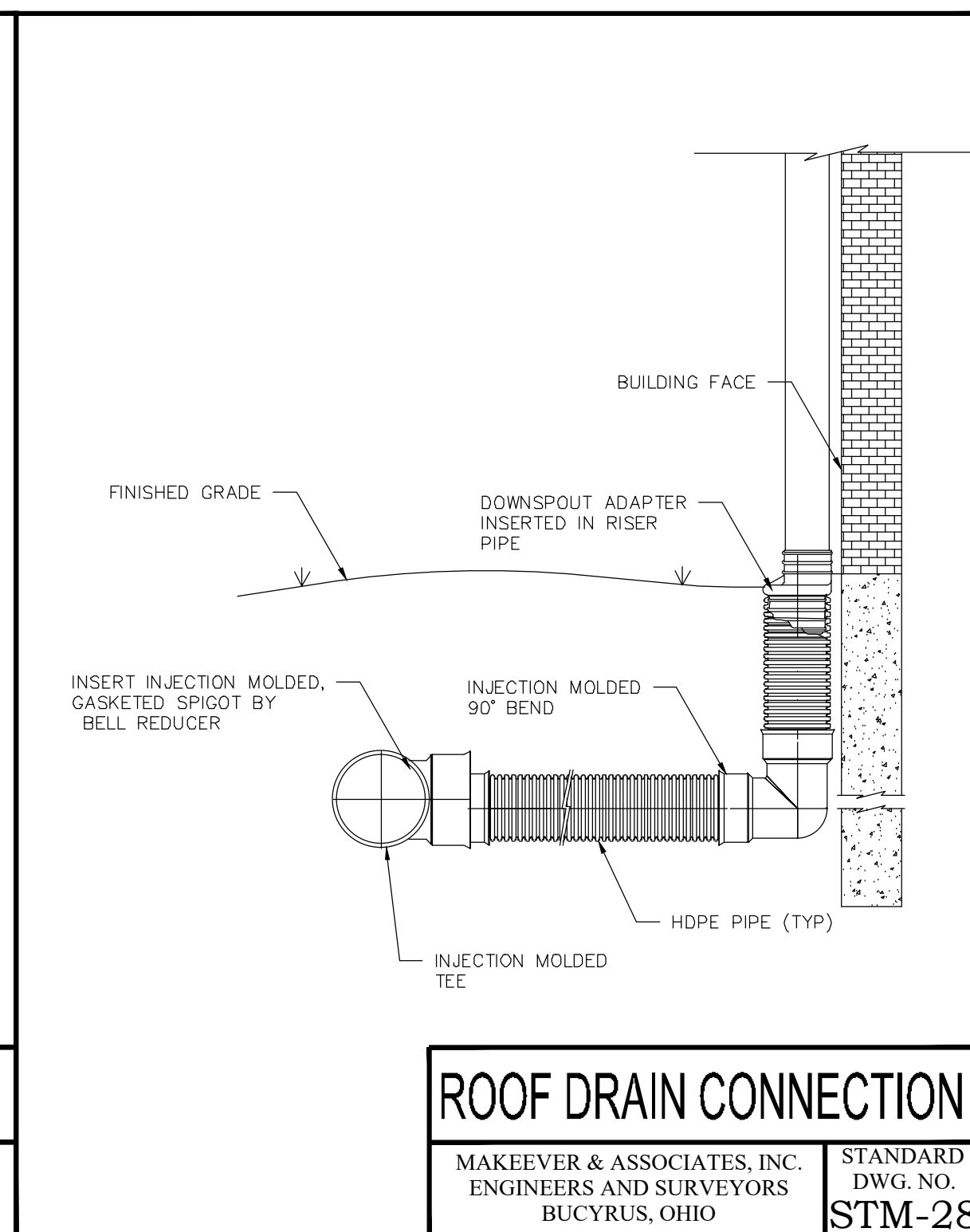
BEDDING FOR SANITARY SEWERS
 MAKEEVER & ASSOCIATES, INC.
 ENGINEERS AND SURVEYORS
 BUCYRUS, OHIO
 STANDARD DWG. NO. **SAN-21**



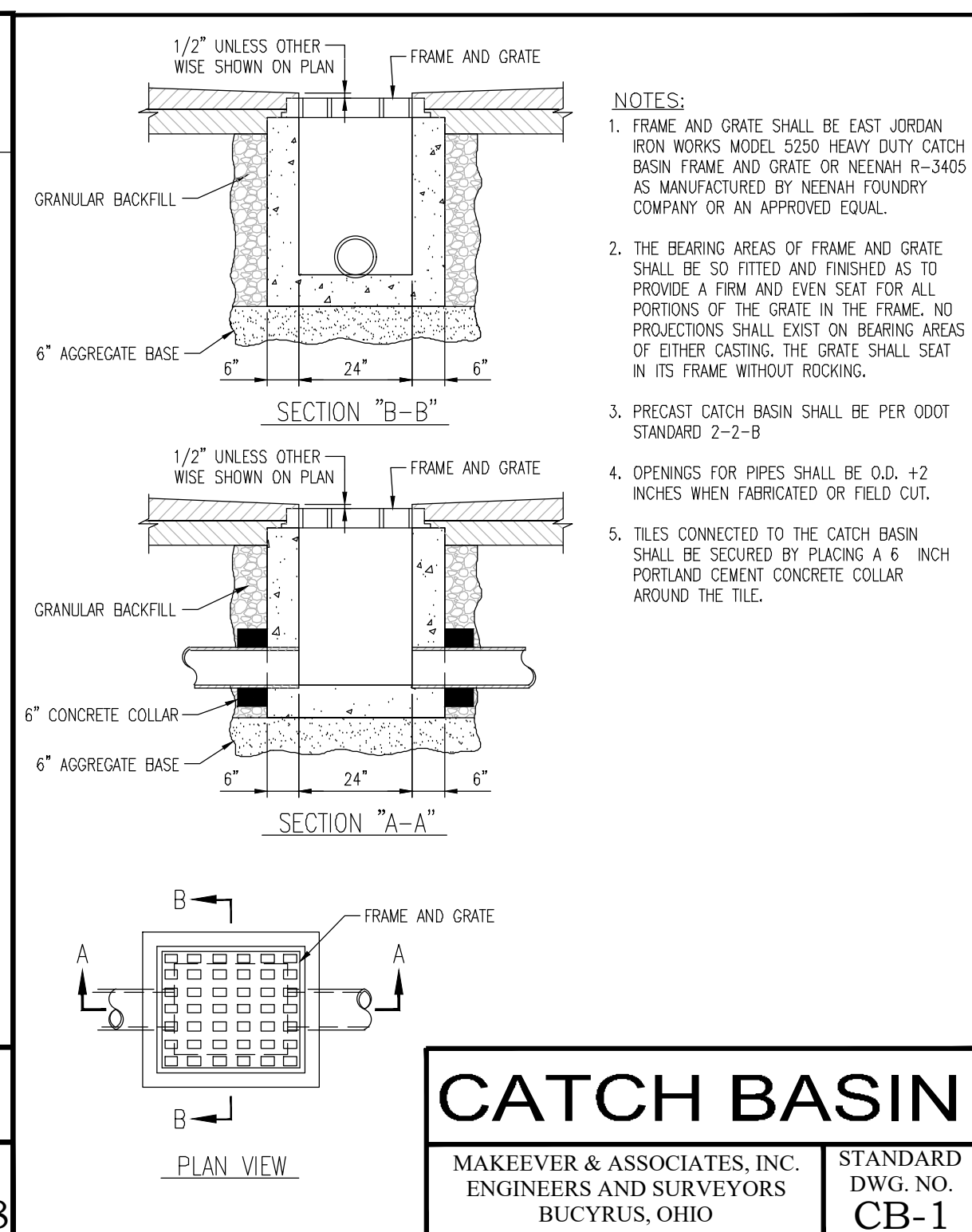
1,000 GALLON GREASE INTERCEPTOR
 Scale: 1/2" = 1'-0"
 Date: 12/22/2015
 Dwg. No. **GI 1000**
 Stiger Precast, Inc.
 17793 St Hwy, 231 Nevada, OH 44849
 740-482-2313
 800-426-2116



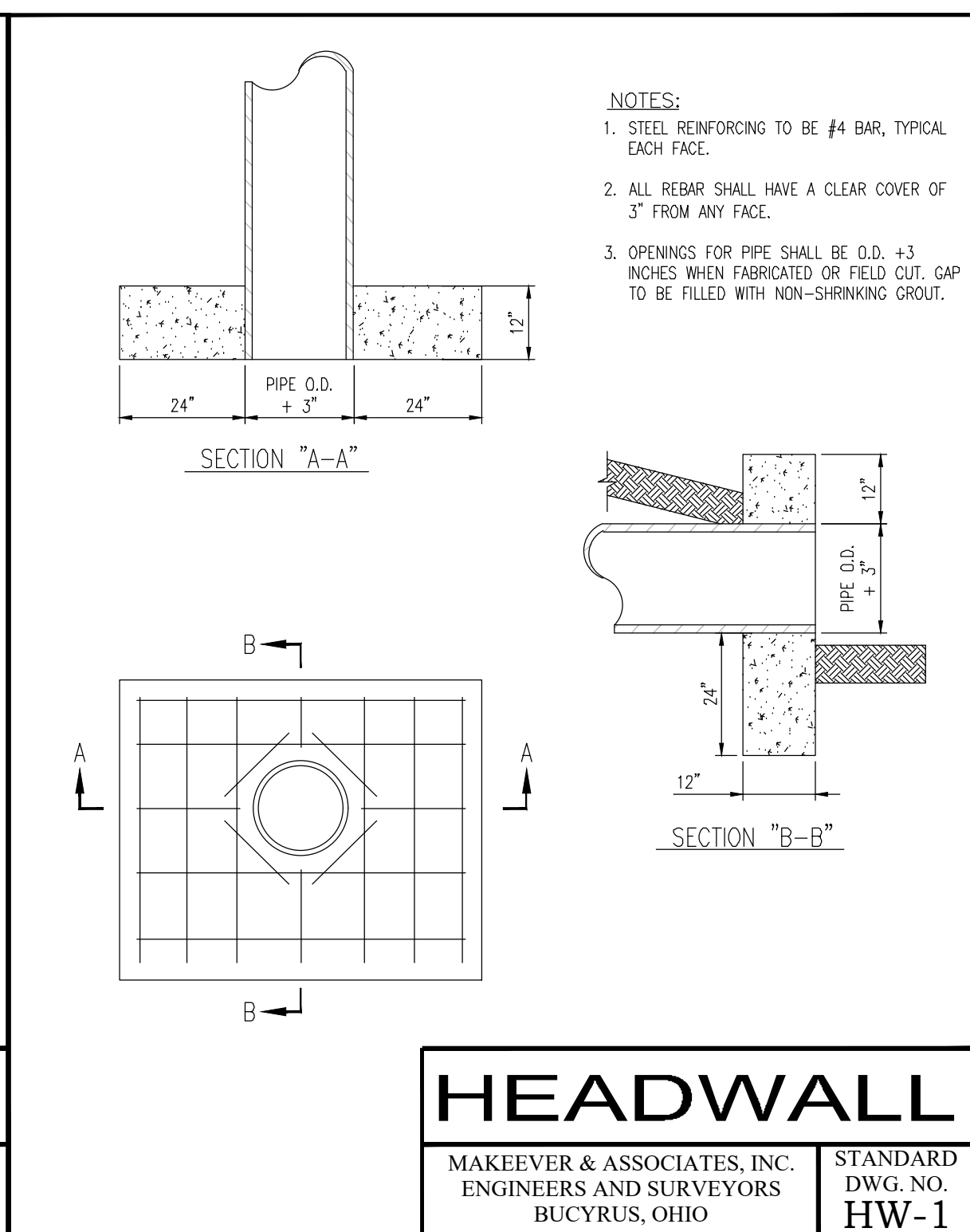
BEDDING FOR STORM SEWERS
 MAKEEVER & ASSOCIATES, INC.
 ENGINEERS AND SURVEYORS
 BUCYRUS, OHIO
 STANDARD DWG. NO. **STM-5**



ROOF DRAIN CONNECTION
 MAKEEVER & ASSOCIATES, INC.
 ENGINEERS AND SURVEYORS
 BUCYRUS, OHIO
 STANDARD DWG. NO. **STM-28**



CATCH BASIN
 MAKEEVER & ASSOCIATES, INC.
 ENGINEERS AND SURVEYORS
 BUCYRUS, OHIO
 STANDARD DWG. NO. **CB-1**



HEADWALL
 MAKEEVER & ASSOCIATES, INC.
 ENGINEERS AND SURVEYORS
 BUCYRUS, OHIO
 STANDARD DWG. NO. **HW-1**

EASEMENT REFERENCE			Grantor	No.	Description	Approval	Date
City's No.	County Recorder Volume	Page					
				1	REVISE UTILITY CONNECTIONS	DJW	2/16/24

REVISIONS			
No.	Description	Approval	Date
1	REVISE UTILITY CONNECTIONS	DJW	2/16/24
AS BUILT			

Plans Prepared By :

Makeever & Associates, Inc.
 P.O. BOX 325, 1810 E. MANSFIELD ST.
 BUCYRUS, OHIO 44820
 Phone: (419) 562-7757 Fax: (419) 562-4717

DYLAN J. WYATT
 E-86763
 Ohio Reg. No. _____ Date _____

STATE OF OHIO
 REGISTERED PROFESSIONAL ENGINEER
 DYLAN J. WYATT
 E-86763

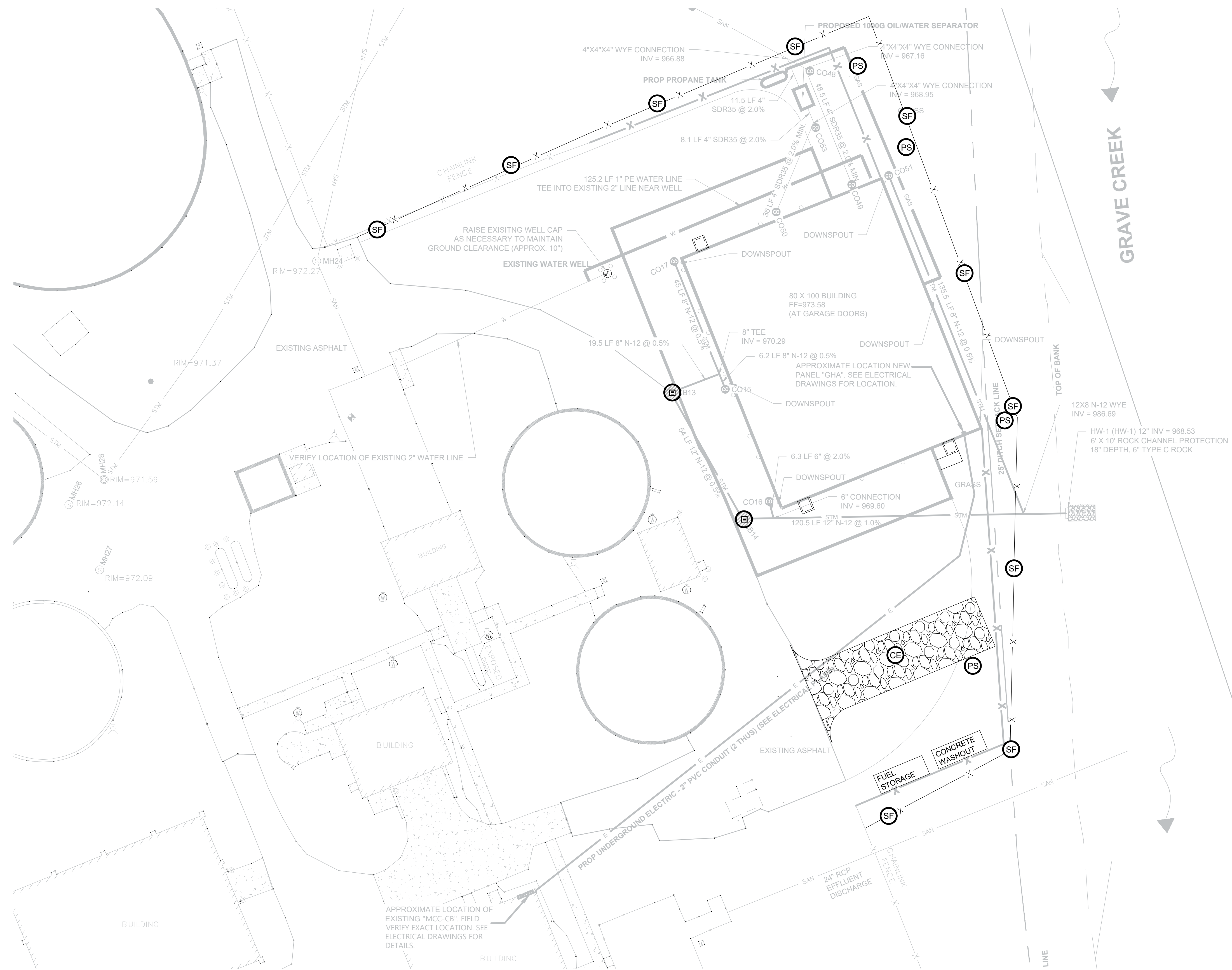
STANDARD DETAILS

ENG. FILE NO. _____
 IMP. ACCT. NO. _____
 CONTRACT NO. _____
 COMPLETION DATE _____
 CONTRACTOR _____

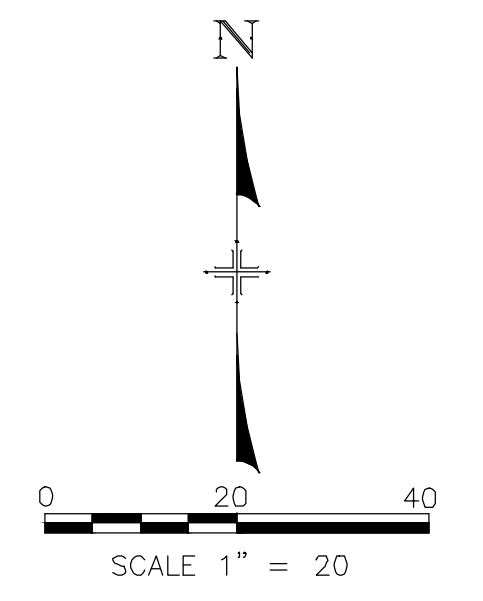
OMNESS DESIGN INC.
 MARION CO. WWTP GARAGE
 2160 RICHLAND RD

Scale : Horiz. = AS NOTED
 Vert. = AS NOTED
 Original Sheet Size = 24"x36"
 Date : 2-6-2024

Sheet No. : 7 OF 10
 S:\2023\202
 Dwg. No. : 23-202-001



- LEGEND**
- (SF) SILT FENCE - 540 FT
 - (IP) INLET PROTECTION (2)
 - (OD) ODOT DM4.4 INLET PROTECTION
 - (PS) PERMANENT SEEDING
 - (CE) CONSTRUCTION ENTRANCE



EASEMENT REFERENCE			Grantor
City's No.	County Recorder Volume	Page	

REVISIONS			
No.	Description	Approval	Date
1	REVISE UTILITY CONNECTIONS	DJW	2/16/24
AS BUILT			

Plans Prepared By :

akeever & Associates, Inc.
P.O. BOX 325, 1810 E. MANSFIELD ST.
BUCYRUS, OHIO 44820
Phone: (419) 562-7757 Fax: (419) 562-4717

DYLAN J. WYATT

E-86763 Ohio Reg. No. _____ Date _____

SWP3 PLAN

ENG. FILE NO. _____

IMP. ACCT. NO. _____

CONTRACT NO. _____

COMPLETION DATE _____

CONTRACTOR _____

OMNESS DESIGN INC.

MARION CO. WWTP GARAGE
2160 RICHLAND RD

Scale : Horiz. = AS NOTED
Vert. = AS NOTED

Original Sheet Size = 24"x36"

Date : 2-6-2024

Sheet No. : 8 OF 10

S:\2023\202 Dwg. No. : 23-202-001

STORM WATER ROUTING

OVERALL RUNOFF WILL BE COLLECTED IN CATCH BASINS AND WILL FLOW THROUGH A SERIES OF STORM SEWER PIPES. THESE STORM SEWERS IN TURN FLOW INTO THE SEDIMENT/WATER QUALITY BASIN. THE OUTLET FOR THIS SEDIMENT/WATER QUALITY BASIN WILL BE CONSTRUCTED WITH A CONCRETE STRUCTURE AND RIPRAP CHANNEL PROTECTION IN ACCORDANCE WITH ODOT SPECIFICATIONS. THE SEDIMENT/WATER QUALITY BASIN AND OUTLET STRUCTURE WILL BE CONSTRUCTED IN ACCORDANCE WITH ODOT SPECIFICATIONS.

WASTE MATERIALS

ALL WASTE MATERIALS WILL BE REMOVED FROM THE SITE DAILY. NO CONSTRUCTION WASTE MATERIALS WILL BE BURIED ONSITE. ALL PERSONNEL WILL BE INSTRUCTED REGARDING THE CORRECT PROCEDURE FOR WASTE DISPOSAL. NOTICE STATING THESE PRACTICES WILL BE POSTED IN THE OFFICE TRAILER AND THE CONTRACTOR, THE INDIVIDUAL WHO MANAGES THE DAY-TO-DAY SITE OPERATIONS, WILL BE RESPONSIBLE FOR SEEING THAT THESE PROCEDURES ARE FOLLOWED DURING THE CONSTRUCTION PHASE OF THE PROJECT. CONTRACTOR SHALL KEEP CONTAINERS AVAILABLE ON SITE FOR DISPOSAL OF DEBRIS, TRASH, HAZARDOUS OR PETROLEUM WASTES. CONTAINERS SHALL BE COVERED AND LEAK-PROOF.

TOXIC OR HAZARDOUS WASTE

ALL HAZARDOUS WASTE MATERIALS WILL BE DISPOSED OF IN THE MANNER SPECIFIED BY LOCAL OR STATE REGULATION OR BY THE MANUFACTURER. SITE PERSONNEL WILL BE INSTRUCTED IN THESE PRACTICES AND THE CONTRACTOR, THE INDIVIDUAL WHO MANAGES DAY-TO-DAY SITE OPERATIONS, WILL BE RESPONSIBLE FOR SEEING THAT THESE PRACTICES ARE FOLLOWED.

SANITARY WASTE

PORTABLE SANITARY WASTE FACILITIES WILL BE PROVIDED ONSITE AND THE COLLECTED WASTE DISPOSED OF PROPERLY.

WASTE DISPOSAL

CONTRACTOR SHALL KEEP CONTAINERS AVAILABLE ON SITE FOR DISPOSAL OF DEBRIS, TRASH, HAZARDOUS OR PETROLEUM WASTES.

CLEAN HARD FILL

BRICKS, HARDENED CONCRETE, AND SOIL WASTE THAT ARE CONTAMINATED SHALL NOT BE LOCATED NEAR CATCH BASINS, WATERCOURSES, DRAINAGE DITCHES, FIELD DRAINS AND OTHER STORM WATER DRAINAGE AREAS.

CONSTRUCTION AND DEMOLITION DEBRIS

CONSTRUCTION AND DEMOLITION DEBRIS WASTE WILL BE DISPOSED OF IN AN OHIO EPA APPROVED C&DD LANDFILL AS REQUIRED BY OHIO REVISED CODE (ORC) 3714.

CONSTRUCTION CHEMICAL COMPOUNDS

MIXING OR STORAGE OF COMPOUNDS SUCH AS FERTILIZERS, LIME, ASPHALT, AND CONCRETE SHALL NOT BE LOCATED NEAR CATCH BASINS, WATERCOURSES, DRAINAGE DITCHES, FIELD DRAINS AND OTHER STORM WATER DRAINAGE AREAS. THIS LOCATION WILL BE DETERMINED BY THE CONSTRUCTION MANAGER.

EQUIPMENT FUELING AND MAINTENANCE

DESIGNATED AREAS FOR FUELING AND/OR PERFORMING VEHICLE MAINTENANCE SHALL BE IN LOCATED AWAY FROM WATERCOURSES, DRAINAGE DITCHES, FIELD DRAINS AND OTHER STORM WATER DRAINAGE AREAS. THIS LOCATION WILL BE DETERMINED BY THE CONSTRUCTION MANAGER.

NO STORAGE TANKS SHALL BE KEPT ON SITE.

CONCRETE WASH WATER

DESIGNATED AREAS FOR CONCRETE CHUTES OR OTHER WASH WATER SHALL BE LOCATED AWAY FROM WATERCOURSES, DRAINAGE DITCHES, FIELD DRAINS AND OTHER STORM WATER DRAINAGE AREAS. THIS LOCATION WILL BE DETERMINED BY THE CONSTRUCTION MANAGER.

CONTAMINATED SOILS

ALL CONTAMINATED SOILS BY PETROLEUM OR OTHER CHEMICAL SPILLS MUST BE TREATED AND/OR DISPOSED IN OHIO EPA APPROVED SOLID WASTE MANAGEMENT FACILITIES OR HAZARDOUS WASTE TREATMENT, STORAGE OR DISPOSAL FACILITIES.

SPILL REPORTING REQUIREMENTS

IN AN EVENT OF A SMALL RELEASE, LESS THAN 25 GALLONS OF PETROLEUM WASTE, THE CONTRACTOR SHALL USE PETROLEUM BASED AND CONCRETE CURING COMPOUNDS PER MANUFACTURER'S HANDLING PROCEDURES.

IN AN EVENT OF A LARGE RELEASE, MORE THAN 25 GALLON OF PETROLEUM WASTE, THE CONTRACTOR SHALL CONTACT OHIO EPA (AT 1-800-282-9378), THE LOCAL FIRE DEPARTMENT AND THE LOCAL EMERGENCY PLANNING COMMITTEE (LEPC) WITHIN 30 MINUTES OF A SPILL OF 25 OR MORE GALLONS.

OPEN BURNING

OPEN BURNING IS ONLY PERMITTED IN RESTRICTED AREAS FOR BARBECUES, HEATING, AND CERTAIN OCCUPATIONAL PURPOSES (AS DEFINED IN OAC 3745-19).

NO OPEN BURNING IS ALLOWED IN A NON-RESTRICTED AREA WHICH IS WITHIN 1000 FEET OF AN INHABITED BUILDING, OPEN BURNING IN AN UNRESTRICTED AREA IS LIMITED TO SCRAP LUMBER, WOODEN FENCE POSTS, AGRICULTURAL, LAND CLEARING, OR LANDSCAPE WASTES.

DUST CONTROLS/SUPPRESSANTS

CONTRACTOR SHALL KEEP DUST TO A MINIMUM BY SPRINKLING DUST SUPPRESSANT. THE DUST SUPPRESSANT SHALL BE KEPT AWAY FROM CATCH BASINS, WATERCOURSES, DRAINAGE DITCHES, FIELD DRAINS AND OTHER STORM WATER DRAINAGE AREAS.

AIR PERMITTING REQUIREMENTS

CONTRACTOR SHALL BEWARE THAT AIR POLLUTION PERMITS MAY BE REQUIRED FOR ACTIVITIES INCLUDING, BUT NOT LIMITED TO, MOBILE CONCRETE BATCH PLANTS, MOBILE ASPHALT PLANTS, CONCRETE CRUSHERS, AND LARGE GENERATORS.

SPILL PREVENTION CONTROL AND COUNTERMEASURES (SPCC) PLAN

INVENTORY OF MATERIALS

THE MATERIALS OR SUBSTANCES LISTED BELOW ARE EXPECTED TO BE PRESENT ONSITE DURING CONSTRUCTION:

- CONCRETE
- DETERGENTS
- PAINTS (ENAMEL AND LATEX)
- METAL STUDS
- MASONRY BLOCK
- TAR
- FERTILIZERS
- PETROLEUM BASED PRODUCTS
- CLEANING SOLVENTS
- WOOD
- ROOFING SHINGLES
- LAMPS (INCLUDES FLUORESCENT LAMPS)

SPILL PREVENTION

MATERIAL MANAGEMENT PRACTICES:

THE FOLLOWING ARE THE MATERIAL MANAGEMENT PRACTICES THAT WILL BE USED TO REDUCE THE RISK OF SPILLS OR OTHER ACCIDENTAL EXPOSURE OF MATERIALS AND SUBSTANCES TO STORM WATER RUNOFF.

GOOD HOUSEKEEPING:

THE FOLLOWING GOOD HOUSEKEEPING PRACTICES WILL BE FOLLOWED ONSITE DURING THE CONSTRUCTION.

- AN EFFECT WILL BE MADE TO STORE ONLY ENOUGH PRODUCT REQUIRED TO DO THE JOB.
- ALL MATERIALS STORED ONSITE WILL BE STORED IN A NEAT, ORDERLY MANNER IN THEIR APPROPRIATE CONTAINERS AND, IF POSSIBLE, UNDER A ROOF OR OTHER ENCLOSURE.
- PRODUCT WILL BE KEPT IN THEIR ORIGINAL CONTAINERS WITH THE ORIGINAL MANUFACTURER'S LABEL.
- SUBSTANCES WILL NOT BE MIXED WITH ONE ANOTHER UNLESS RECOMMENDED BY THE MANUFACTURER.
- WHENEVER POSSIBLE, ALL OF A PRODUCT WILL BE USED UP BEFORE DISPOSING OF THE CONTAINER.
- MANUFACTURER'S RECOMMENDATIONS FOR PROPER USE AND DISPOSAL WILL BE FOLLOWED.
- THE SITE SUPERINTENDENT WILL INSPECT DAILY TO ENSURE PROPER USE AND DISPOSAL OF MATERIALS ONSITE.
- MATERIAL SAFETY AND DATA SHEETS WILL BE AVAILABLE UPON REQUEST.
- THE CONTRACTOR CAN USE PROTECTED STORAGE AREAS FOR INDUSTRIAL OR CONSTRUCTION MATERIALS TO MINIMIZE EXPOSURE TO SUCH MATERIALS TO STORM WATER.

HAZARDOUS PRODUCTS:

THESE PRACTICES ARE USED TO REDUCE THE RISKS ASSOCIATED WITH HAZARDOUS MATERIALS.

- PRODUCTS WILL BE KEPT IN ORIGINAL CONTAINERS UNLESS THEY ARE NOT RESEALABLE.
- ORIGINAL LABELS AND MATERIAL SAFETY DATA SHEETS (MSDS) WILL BE RETAINED ON SITE.
- IF SURPLUS PRODUCT MUST BE DISPOSED OF, MANUFACTURER'S OR LOCAL AND STATE RECOMMENDED METHODS FOR PROPER DISPOSAL WILL BE FOLLOWED.

PRODUCT SPECIFIC PRACTICES

THE FOLLOWING PRODUCT PRACTICES WILL BE FOLLOWED ONSITE:

PETROLEUM PRODUCTS:

ALL ONSITE VEHICLES WILL BE MONITORED FOR LEAKS AND RECEIVE REGULAR PREVENTATIVE MAINTENANCE TO REDUCE THE CHANCE OF LEAKAGE. PETROLEUM PRODUCTS WILL BE STORED IN TIGHTLY SEALED CONTAINERS WHICH ARE CLEARLY LABELED. ANY ASPHALT SUBSTANCES USED ONSITE WILL BE APPLIED ACCORDING TO THE MANUFACTURER'S RECOMMENDATIONS.

FERTILIZERS:

FERTILIZERS USED WILL BE APPLIED PER OHIO DEPARTMENT OF TRANSPORTATION (ODOT) SPECIFICATIONS. ONCE APPLIED, FERTILIZER WILL BE WORKED INTO THE SOIL TO LIMIT EXPOSURE TO STORM SEWER. STORAGE WILL BE IN A COVERED SHED OR OFFICE. THE CONTENTS OF ANY PARTIALLY USED BAGS OF FERTILIZER WILL BE TRANSFERRED TO A SEALABLE PLASTIC BIN TO AVOID SPILLS.

PAINTS:

ALL CONTAINERS WILL BE TIGHTLY SEALED AND STORED WHEN NOT REQUIRED FOR USE. EXCESS PAINT WILL NOT BE DISCHARGED TO THE STORM SEWER SYSTEM BUT WILL BE PROPERLY DISPOSED OF ACCORDING TO MANUFACTURER'S INSTRUCTIONS OR STATE AND LOCAL REGULATIONS.

CONCRETE TRUCKS:

CONCRETE TRUCKS WILL WASH OUT OR DISCHARGE SURPLUS CONCRETE ONLY IN AREAS DESIGNATED. THESE DESIGNATED AREAS SHALL BE LOCATED AWAY FROM WATERCOURSES, DRAINAGE DITCHES, FIELD DRAINS AND OTHER STORM WATER DRAINAGE AREAS. THE LOCATION WILL BE DETERMINED BY THE CONSTRUCTION MANAGER.

SPILL CONTROL PRACTICES

IN ADDITION TO THE GOOD HOUSEKEEPING AND MATERIAL MANAGEMENT PRACTICES DISCUSSED IN THE PREVIOUS SECTIONS OF THIS PLAN, THE FOLLOWING PRACTICES WILL BE FOLLOWED FOR SPILL PREVENTION AND CLEANUP:

- MANUFACTURER'S RECOMMENDED METHODS FOR SPILL CLEANUP WILL BE CLEARLY POSTED AND SITE PERSONNEL WILL BE MADE AWARE OF THE PROCEDURES AND THE LOCATION OF THE INFORMATION AND CLEANUP SUPPLIES.
- MATERIALS AND EQUIPMENT NECESSARY FOR SPILL CLEANUP WILL BE KEPT IN THE MATERIAL STORAGE AREA ONSITE. EQUIPMENT AND MATERIALS MAY INCLUDE BUT NOT BE LIMITED TO BROOMS, DUST PANS, MOPS, RAGS, GLOVES, GOGGLES, KITTY LITTER, SAND, SAWDUST, AND PLASTIC AND METAL TRASH CONTAINERS SPECIFICALLY FOR THIS PURPOSE.
- ALL SPILLS WILL BE CLEANED UP IMMEDIATELY AFTER DISCOVERY.
- THE SPILL AREA WILL BE KEPT WELL VENTILATED AND PERSONNEL WILL WEAR APPROPRIATE PROTECTIVE CLOTHING TO PREVENT INJURY FROM CONTACT WITH A HAZARDOUS SUBSTANCE.
- SPILLS OF TOXIC OR HAZARDOUS MATERIAL WILL BE REPORTED TO THE APPROPRIATE STATE OR LOCAL GOVERNMENT AGENCY, REGARDLESS OF THE SIZE.
- THE SPILL PREVENTION PLAN WILL BE ADJUSTED TO INCLUDE MEASURES TO PREVENT THIS TYPE OF SPILL FROM REOCCURRING AND HOW TO CLEAN UP THE SPILL IF THERE IS ANOTHER ONE. A DESCRIPTION OF THE SPILL, WHAT CAUSED IT, AND THE CLEANUP MEASURES WILL ALSO BE INCLUDED.
- THE CONTRACTOR, RESPONSIBLE FOR DAY-TO-DAY SITE OPERATIONS, WILL BE IN CHARGE OF SPILL PREVENTION AND CLEANUP. HE WILL DESIGNATE AT LEAST TWO OTHER SITE PERSONNEL WHO WILL RECEIVE SPILL PREVENTION AND CLEANUP TRAINING. THESE INDIVIDUALS WILL EACH BECOME RESPONSIBLE FOR A PARTICULAR PHASE OF PREVENTION AND CLEANUP. THE NAMES OF RESPONSIBLE SPILL PERSONNEL WILL BE POSTED IN THE MATERIAL STORAGE AREA.

PROCESS WASTEWATER/LEACHATE MANAGEMENT

ALL PROCESS WASTEWATERS, (WHICH INCLUDES EQUIPMENT WASHING, LEACHATE ASSOCIATED WITH ON-SITE WASTE DISPOSAL, AND CONCRETE WASH-OUTS) SHALL BE COLLECTED AND DISPOSED OF PROPERLY TO A PUBLICLY OWNED TREATMENT WORKS.

OFFSITE VEHICLE TRACKING

A STABILIZED CONSTRUCTION ENTRANCE HAS BEEN PROVIDED TO HELP REDUCE VEHICLE TRACKING OF SEDIMENT. THE PAVED STREETS ADJACENT TO THE SITE ENTRANCE WILL BE MAINTAINED TO REMOVE ANY EXCESS MUD, DIRT, OR ROCK TRACKED FROM THE SITE. DUMP TRUCKS HAULING MATERIAL FROM THE CONSTRUCTION SITE WILL BE COVERED WITH A TARP/AULIN.

CERTIFICATION OF COMPLIANCE WITH FEDERAL, STATE, AND LOCAL REGULATIONS

THE STORM WATER POLLUTION PREVENTION PLAN REFLECTS THE COUNTY REQUIREMENTS FOR STORM WATER MANAGEMENT AND EROSION AND SEDIMENT CONTROL. TO ENSURE COMPLIANCE THIS PLAN WAS ESTABLISHED BASED ON A STORM WATER POLLUTION PREVENTION PLAN EXAMPLE PROVIDED BY THE OHIO EPA.

MAINTENANCE/INSPECTION PROCEDURES

THESE ARE THE INSPECTION AND MAINTENANCE PRACTICES THAT WILL BE USED TO MAINTAIN EROSION AND SEDIMENT CONTROLS:

1. ALL CONTROL MEASURES WILL BE INSPECTED AT LEAST ONCE EACH WEEK AND FOLLOWED ANY STORM EVENT OF 0.5 INCHES OR GREATER BY A QUALIFIED INSPECTION PERSONNEL.
2. ALL MEASURES WILL BE MAINTAINED IN GOOD WORKING ORDER; REPAIRS REQUIRED WILL BE COMPLETED WITHIN 24 HOURS OF REPORT.
3. SEDIMENT WILL BE REMOVED FROM SILT FENCE WHEN IT HAS REACHED ONE-THIRD THE HEIGHT OF THE FENCE.
4. SILT FENCE WILL BE INSPECTED FOR DEPTH OF SEDIMENT AND TEARS, TO SEE IF THE FABRIC IS SECURELY ATTACHED TO THE FENCE POST, AND TO SEE IF THE FENCE POSTS ARE FIRMLY IN THE GROUND.
5. SEDIMENT IN THE DRAINAGE SWALES WILL BE REMOVED.
6. TEMPORARY AND PERMANENT SEEDING AND PLANTING WILL BE INSPECTED FOR BARE SPOTS, WASHOUTS, AND HEALTHY GROWTH.
7. A MAINTENANCE INSPECTION REPORT WILL BE MADE AFTER EACH INSPECTION. A COPY OF THE REPORT FORM TO BE COMPLETED BY THE INSPECTOR IS ATTACHED.
8. THE CONTRACTOR WILL BE RESPONSIBLE FOR THE INSPECTIONS, SUCH REPAIRS AND FILLING OUT THE INSPECTION AND MAINTENANCE REPORT.
9. INSPECTIONS MAY BE REDUCED TO MONTHLY PLUS RAIN EVENTS IF SITE IS DORMANT.
10. REPAIR OR REPLACE MISSING OR SUB-FUNCTIONAL BMP'S WITHIN 3 DAYS FOR NON-SEDIMENT PONDS AND 10 DAYS FOR SEDIMENT PONDS.
11. DOCUMENT INSPECTIONS WITH OHIO STORM WATER POLLUTION PREVENTION PLAN TEMPLATE REPORTS. MAINTAIN RECORDS FOR THREE YEARS.

NON-STORM DISCHARGES

IT IS EXPECTED THAT THE FOLLOWING NON-STORM DISCHARGE WILL OCCUR FROM THE SITE DURING THE CONSTRUCTION PERIOD:

- WATER FROM WATER LINE FLUSHINGS
- PAVEMENT WASH WATERS (WHERE NO SPILLS OR LEAKS OF TOXIC HAZARDOUS MATERIALS HAVE OCCURRED).
- UNCONTAMINATED GROUND WATER (FROM DEWATERING EXCAVATION).

ALL NON-STORM WATER DISCHARGES WILL BE DIRECTED TO DRAINAGE SWALES PRIOR TO DISCHARGE.

DEWATERING

ALL TRENCHES, EXCAVATIONS, AND LOW AREAS THAT REQUIRE DEWATERING SHALL HAVE THE WATER DIRECTED/PUMPED TO A SEDIMENT BASIN PRIOR TO DISCHARGE FROM THE SITE. IF OILY OR CHEMICALLY CONTAMINATED WATER IS TO BE GENERATED, NOTIFY ENGINEER PRIOR TO ANY DISCHARGE.



SOILS MAP
NTS

SITE DESCRIPTION	
PROJECT NAME AND LOCATION:	MARION COUNTY WWTP GARAGE
(LATITUDE, LONGITUDE, OR ADDRESS)	2160 RICHLAND RD MARION OH 43302
OWNER NAME AND ADDRESS:	MARION COUNTY SANITARY ENGINEER 222 W. CENER ST MARION OH 43302
DESCRIPTION: (PURPOSE AND TYPES OF SOIL DISTURBING ACTIVITIES)	
THIS PROJECT IS FOR THE DEVELOPMENT A NEW VEHICLE STORAGE BUILDING	
SOIL DISTURBING ACTIVITIES WILL INCLUDE: SITE PREPARATION AND BUILDING CONSTRUCTION.	
SITE AREA:	THE SITE AREA OF 0.76 ACRES WILL HAVE .70 ACRES DISTURBED BY THE ABOVE LISTED CONSTRUCTION ACTIVITIES
RUNOFF COEFFICIENT:	PRE-CONSTRUCTION COEFFICIENT OF THE SITE IS CN = 75 POST-CONSTRUCTION COEFFICIENT FOR THE SITE WILL BE CN = 92
IMPERVIOUS AREA:	PRE-CONSTRUCTION IMPERVIOUS AREA = 0% POST-CONSTRUCTION IMPERVIOUS AREA = 74.5%
EXISTING SOIL TYPES:	Gwg1B1 - GLYNWOOD SILOT LOAM GROUND MORRAINE 2% TO 6% SLOPE Pw - PEWAMO SILTY CLAY LOAM, 0% TO 1% SLOPES
EXISTING LAND USE:	THIS SITE WAS PREVIOUSLY UNDEVELOPED FIELD AT WWTP

SEQUENCE OF CONSTRUCTION SCHEDULE ACTIVITIES:	
THE ORDER OF ACTIVITIES WILL BE AS FOLLOWS:	
1.	CLEAR AND GRUB AREA WITHIN CONSTRUCTION LIMITS
2.	INSTALL SILT FENCE, AND SEDIMENT CONTROLS WITHIN 7 DAYS OF GRUBBING ACTIVITIES
3.	INSTALL STABILIZED CONSTRUCTION ENTRANCE
4.	REMOVE TOPSOIL FROM SITE AND STOCK PILE
5.	STABILIZE STOCKPILES WITHIN 7 DAYS OF LAST CONSTRUCTION ACTIVITY
6.	PERFORM SITE GRADING ACTIVITIES
7.	INSTALL UNDERGROUND UTILITIES
8.	INSTALL SEDIMENT AND EROSION CONTROLS AROUND ALL CATCH BASINS
9.	INSTALL DRIVEWAY AND PARKING AREA
10.	CONSTRUCT BUILDINGS
11.	COMPLETE GRADING AND INSTALL PERMANENT SEEDING WITHIN 7 DAYS OF LAST CONSTRUCTION ACTIVITY
12.	REMOVE ACCUMULATED SEDIMENT FROM SEDIMENT AND EROSION CONTROL DEVICES (CONTINUAL EVENT)
13.	WHEN ALL CONSTRUCTION ACTIVITY IS COMPLETED AND THE SITE IS STABILIZED, REMOVE SEDIMENT AND EROSION CONTROL AND RESEED ANY AREAS DISTURBED BY THIS REMOVAL
14.	OWNER TO PROVIDE MAINTENANCE
NAME OF RECEIVING WATERS:	EXISTING STORM RUNOFF DISCHARGES TO GRAVE CREEK

EASEMENT REFERENCE				REVISIONS			
City's No.	County Recorder	Volume	Page	No.	Description	Approval	Date
				1	REVISE UTILITY CONNECTIONS	DJW	2/16/24
					AS BUILT		

Plans Prepared By :

Makeever & Associates, Inc.
P.O. BOX 325, 1810 E. MANSFIELD ST.
BUCYRUS, OHIO 44820
Phone: (419) 562-7757 Fax: (419) 562-4717

DYLAN J. WYATT

E-86763
Ohio Reg. No. _____ Date _____

SWP3 NOTES

ENG. FILE NO. _____
IMP. ACCT. NO. _____
CONTRACT NO. _____
COMPLETION DATE _____
CONTRACTOR _____

OMNESS DESIGN INC.
MARION CO. WWTP GARAGE
2160 RICHLAND RD

Scale : Horiz. = AS NOTED
Vert. = AS NOTED
Original Sheet Size = 24"x36"
Date : 2-6-2024

Sheet No. : 9 OF 10
S:\2023\202
Dwg. No. : 23-202-001

EROSION AND SEDIMENT CONTROL

1. THE IMPLEMENTATION OF EROSION AND SEDIMENT CONTROL PRACTICES SHALL CONFORM TO THE OHIO DEPARTMENT OF NATURAL RESOURCES' RAINWATER AND LAND DEVELOPMENT MANUAL, AND THE OHIO EPA'S GENERAL PERMIT PROGRAM FOR THE DISCHARGE OF STORM WATER. IF CONFLICTS EXIST REGARDING THE EROSION AND SEDIMENT CONTROL PRACTICES, THE MORE RESTRICTIVE SHALL APPLY.
2. EROSION AND SEDIMENT CONTROL PRACTICES NOT ALREADY ON THIS PLAN MAY BE NECESSARY DUE TO UNFORESEEN ENVIRONMENTAL CONDITIONS AND/OR CHANGES IN DRAINAGE PATTERNS CAUSED BY EARTH-MOVING ACTIVITY. ADDITIONAL PRACTICES SHALL BE IMPLEMENTED AT THE DEVELOPER'S EXPENSE AS DIRECTED BY THE OWNER, ENGINEER, OEPA OR GOVERNING AUTHORITY.
3. THE DEVELOPER AND/OR HIS CONSTRUCTION SUPERINTENDENT SHALL HAVE OVERALL RESPONSIBILITY FOR THE IMPLEMENTATION OF THIS STORM WATER POLLUTION PREVENTION PLAN. THEY SHALL ALSO BE RESPONSIBLE FOR MAKING ALL CONTRACTORS AND SUB-CONTRACTORS AWARE OF THE PROVISIONS ON THIS PLAN.
4. REPAIRS TO ANY EROSION AND SEDIMENT CONTROL MEASURES, STRUCTURES, DEVICES, OR RELATED ITEMS SHALL BE MADE WITHIN 14 DAYS.
5. SEDIMENT BASINS/TRAPS AND PERIMETER SEDIMENT CONTROLS SHALL BE IMPLEMENTED AS THE FIRST STEP OF GRADING AND WITHIN SEVEN DAYS FROM THE START OF THE GRUBBING AND CLEARING OPERATIONS AND SHALL CONTINUE TO FUNCTION UNTIL UPLAND AREAS ARE PERMANENTLY STABILIZED.
6. STREAMS, INCLUDING BEDS AND BANKS, SHALL BE RESTABILIZED IMMEDIATELY AFTER IN-CHANNEL WORK IS COMPLETED, INTERRUPTED, OR STOPPED.

OHIO ENVIRONMENTAL PROTECTION AGENCY NATIONAL POLLUTANT DISCHARGE ELIMINATION SYSTEM NOTES

1. THIS CONTRACT DRAWING SHALL BE MADE AVAILABLE ON SITE AT ALL TIMES AND PRESENTED UPON REQUEST.
2. ALL TEMPORARY AND PERMANENT EROSION AND SEDIMENT CONTROL PRACTICES SHALL BE INSPECTED AT LEAST ONCE EVERY SEVEN CALENDAR DAYS AND WITHIN 24 HOURS AFTER ANY STORM EVENT GREATER THAN 0.50" OF RAIN PER 24-HOUR PERIOD. PERMANENT RECORDS OF MAINTENANCE AND INSPECTION MUST BE MAINTAINED FOR 2 YEARS AFTER THE COMPLETION OF CONSTRUCTION AND THE FILING OF THE NOTICE OF TERMINATION (NOT) PER THE OHIO EPA NPDES PERMIT AND SHOULD INCLUDE THE NAME OF THE INSPECTOR, MAJOR OBSERVATIONS, DATE OF INSPECTION, CERTIFICATION OF COMPLIANCE, AND CORRECTIVE MEASURES TAKEN.
3. NO SOLID OR LIQUID WASTE SHALL BE DISCHARGED INTO STORM WATER RUNOFF. SOLIDS, SANITARY AND TOXIC WASTE MUST BE DISPOSED OF IN A PROPER MANNER IN ACCORDANCE WITH LOCAL, STATE AND FEDERAL REGULATIONS. IT IS PROHIBITED TO BURN, BURY OR POUR OUT ONTO THE GROUND OR INTO THE STORM SEWERS ANY SOLVENTS, PAINTS, STAINS, GASOLINES, DIESEL FUEL, USED MOTOR OIL, HYDRAULIC FLUID, ANTI-FREEZE, CEMENT CURING COMPOUNDS, AND OTHER SUCH TOXIC AND HAZARDOUS WASTE. WASH OUT OF CEMENT TRUCKS SHOULD OCCUR IN A DIKED, DESIGNATED AREA WHERE THE WASHINGS CAN COLLECT AND BE DISPOSED OF PROPERLY WHEN THEY HARDEN. STORAGE TANKS SHOULD BE LOCATED IN DIKED AREAS AWAY FROM ANY DRAINAGE CHANNELS. THE DIKED AREA SHOULD HOLD A VOLUME 110% OF THE LARGEST TANK.
4. THE DEVELOPER SHALL ENSURE A NOTICE OF TERMINATION (NOT) IS FILED PER THE OHIO EPA NPDES PERMIT REQUIREMENTS.

CONSTRUCTION ENTRANCE

STONE SIZE - NO. 2 (2-1/2" TO 1-1/2") OR ITS EQUIVALENT.

LENGTH - AS EFFECTIVE, BUT NOT LESS THAN 70 FEET.

THICKNESS - NOT LESS THAN EIGHT (8) INCHES.

WIDTH - TWENTY (20) FOOT MINIMUM, BUT NOT LESS THAN THE FULL WIDTH AT POINTS WHERE INGRESS OR EGRESS OCCURS.

FILTER CLOTH - GEOTEXTILE MEETING FIGURE 7.4.1 OF THE RAINWATER AND LAND DEVELOPMENT MANUAL WILL BE PLACED OVER THE ENTIRE AREA PRIOR TO PLACING OF STONE.

SURFACE WATER - ALL SURFACE WATER FLOWING OR DIVERTED TOWARD CONSTRUCTION ENTRANCES SHALL BE PIPED ACROSS THE ENTRANCE.

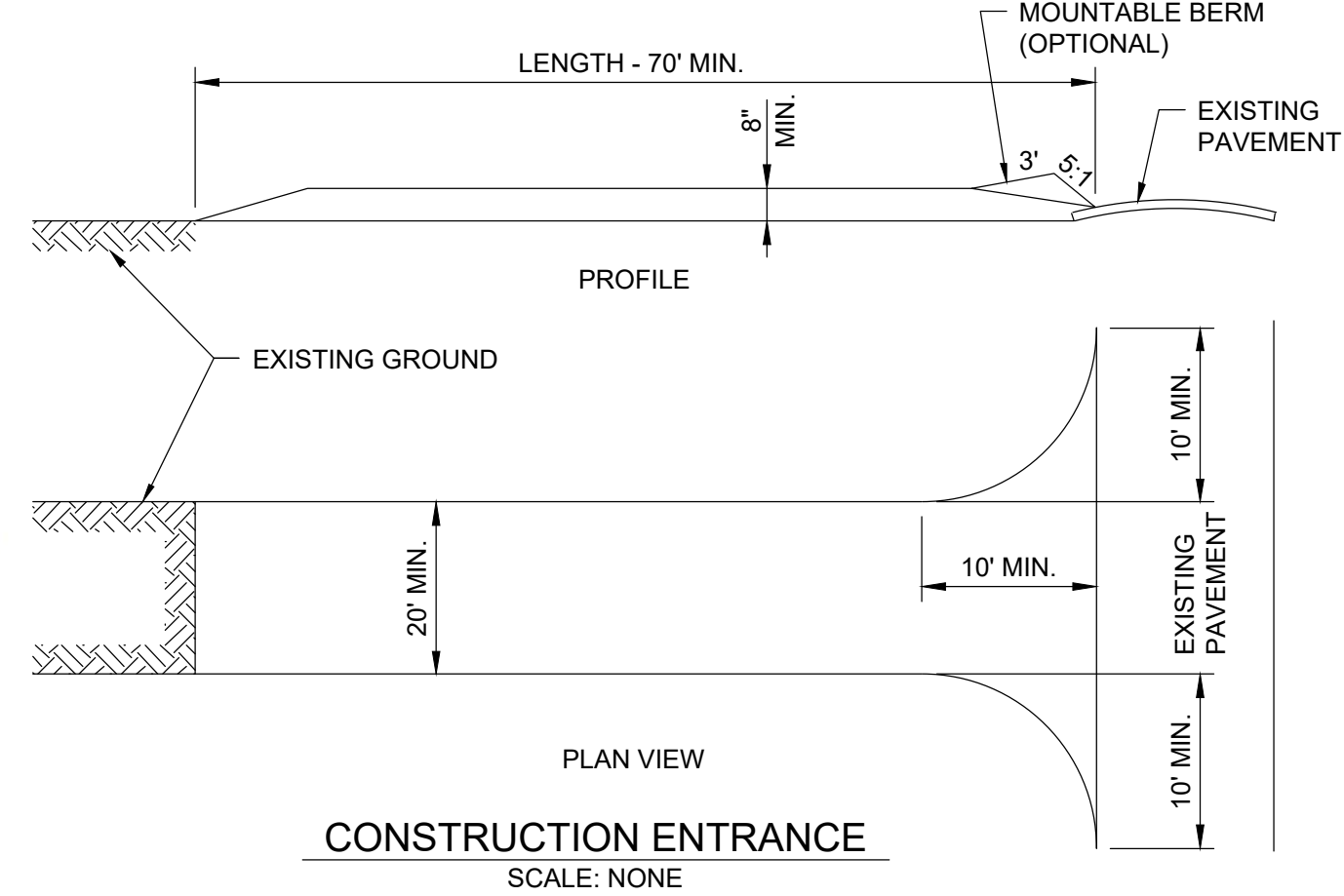
WASHING - WHEN NECESSARY, WHEELS SHALL BE CLEANED TO REMOVE SEDIMENT PRIOR TO ENTRANCE ONTO PUBLIC RIGHT-OF-WAY. WHEN WASHING IS REQUIRED, IT SHALL BE DONE ON AN AREA STABILIZED WITH CRUSHED STONE WHICH DRAINS INTO AN APPROVED SEDIMENT TRAP. ALL SEDIMENT SHALL BE PREVENTED FROM ENTERING ANY STORM DRAIN, DITCH OR WATERCOURSE THROUGH USE OF SAND BAGS, GRAVEL, BOARDS OR OTHER APPROVED METHODS.

MAINTENANCE - THE ENTRANCE SHALL BE MAINTAINED IN A CONDITION WHICH WILL PREVENT TRACKING OR FLOWING OF SEDIMENT ONTO PUBLIC RIGHT-OF-WAY. THIS MAY REQUIRE PERIODIC TOP DRESSING WITH ADDITIONAL STONE AS CONDITIONS DEMAND AND REPAIR AND/OR CLEANOUT OF ANY MEASURES USED TO TRAP SEDIMENT. ALL SEDIMENT SPILLED, DROPPED, WASHED OR TRACKED ONTO PUBLIC RIGHT-OF-WAY MUST BE REMOVED IMMEDIATELY.

PERIODIC INSPECTION AND REQUIRED MAINTENANCE SHALL BE PERFORMED AFTER EACH RAIN.

THIS CONSTRUCTION SHALL INCLUDE ALL MATERIALS AND COSTS RELATIVE TO CONSTRUCTING, MAINTAINING, REMOVAL AND RESTORATION OF STABILIZED ENTRANCE WITHIN THE VARIOUS CONSTRUCTION ITEMS.

THE CONSTRUCTION ENTRANCE SHALL BE INSTALLED AS SOON AS IS PRACTICAL BEFORE MAJOR GRADING ACTIVITIES. CONSTRUCTION ENTRANCES SHALL REMAIN IN PLACE UNTIL THE DISTURBED AREA IS STABILIZED OR REPLACED WITH A PERMANENT ROADWAY SURFACE



SILT FENCE NOTES

SILT FENCE SEDIMENT BARRIER UTILIZES STANDARD STRENGTH OR EXTRA STRENGTH SYNTHETIC FILTER FABRICS. IT IS DESIGNED FOR SITUATIONS IN WHICH ONLY SHEET OR OVERLAND FLOWS ARE EXPECTED.

THE HEIGHT OF A SILT FENCE SHALL NOT EXCEED 36 INCHES (HIGHER FENCES MAY IMPOUND VOLUMES OF WATER SUFFICIENT TO CAUSE FAILURE TO THE STRUCTURE)

THE FILTER FABRIC SHALL BE PURCHASED IN A CONTINUOUS ROLL CUT TO THE LENGTH OF THE BARRIER TO AVOID THE USE OF JOINTS. WHEN JOINTS ARE NECESSARY FILTER CLOTH SHALL BE SPICED TOGETHER ONLY AT A SUPPORT POST WITH A MINIMUM 6-INCH OVERLAYS AND SECURELY SEALED.

WHEN STANDARD STRENGTH FILTER FABRIC IS USED A WIRE MESH SUPPORT FENCE SHALL BE FASTENED SECURELY TO THE UPSLOPE SIDE OF THE POSTS USING HEAVY DUTY WIRE STAPLES AT LEAST 1 INCH LONG, TIE WIRES OR HOG RINGS. THE WIRE SHALL EXTEND INTO THE TRENCH A MINIMUM OF 2 INCHES AND SHALL NOT EXTEND MORE THAN 36 INCHES ABOVE THE ORIGINAL GROUND SURFACE.

POSTS SHALL BE SPACED A MAXIMUM OF 10 FEET APART AT THE BARRIER LOCATION AND DRIVEN SECURELY INTO THE GROUND (MINIMUM OF 12 INCHES). WHEN EXTRA STRENGTH FABRIC IS USED WITHOUT THE WIRE SUPPORT, FENCE POST SPACING SHALL NOT EXCEED 6 FEET.

A TRENCH SHALL BE EXCAVATED APPROXIMATELY 4 INCHES WIDE AND 4 INCHES DEEP ALONG THE LINE OF POSTS AND UPSLOPE FROM THE BARRIER.

THE STANDARD STRENGTH FILTER FABRIC SHALL BE STAPLED OR WIRED TO THE FENCE AND 8 INCHES OF THE FABRIC SHALL BE EXTENDED INTO THE TRENCH. EXCESS MATERIAL SHALL LAY AT THE BOTTOM OF THE TRENCH. THE FABRIC SHALL NOT EXTEND MORE THAN 36 INCHES ABOVE THE ORIGINAL GROUND SURFACE. FILTER FABRIC SHALL NOT BE STAPLED TO EXISTING TREES.

WHEN EXTRA STRENGTH FILTER FABRIC AND CLOSER POST SPACING ARE USED THE WIRE MESH SUPPORT FENCE MAY BE ELIMINATED. IN SUCH A CASE THE FILTER FABRIC IS STAPLED OR WIRED DIRECTLY TO THE POSTS.

THE TRENCH SHALL BE BACKFILLED AND SOIL COMPACTED OVER THE FILTER FABRIC.

SILT FENCES SHALL BE REMOVED WHEN THEY HAVE SERVED THEIR USEFUL PURPOSE BUT NOT BEFORE THE UPSLOPE AREA HAS BEEN PERMANENTLY STABILIZED.

RAINWATER & LAND DEVELOPMENT MANUAL SPECIFICATIONS FOR SILT FENCE

1. SILT FENCE SHALL BE CONSTRUCTED BEFORE UPSLOPE LAND DISTURBANCE BEGINS.

2. ALL SILT FENCE SHALL BE PLACED AS CLOSE TO THE CONTOUR AS POSSIBLE SO THAT WATER WILL NOT CONCENTRATE AT LOW POINTS IN THE FENCE AND SO THAT SMALL SWALES OR DEPRESSIONS THAT MAY CARRY SMALL CONCENTRATED FLOWS TO THE SILT FENCE ARE DISSIPATED ALONG ITS LENGTH.

3. ENDS OF THE SILT FENCES SHALL BE BROUGHT UPSLOPE SLIGHTLY SO THAT WATER PONDED BY THE SILT FENCE WILL BE PREVENTED FROM FLOWING AROUND THE ENDS.

4. SILT FENCE SHALL BE PLACED ON THE FLATTEST AREA AVAILABLE.

5. WHERE POSSIBLE, VEGETATION SHALL BE PRESERVED FOR 5 FEET (OR AS MUCH AS POSSIBLE) UPSLOPE FROM THE SILT FENCE. IF VEGETATION IS REMOVED, IT SHALL BE REESTABLISHED WITHIN 7 DAYS FROM THE INSTALLATION OF THE SILT FENCE.

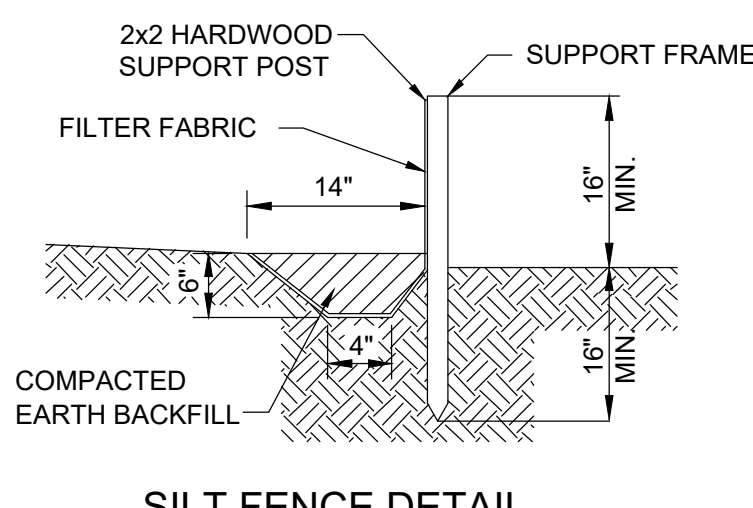
6. THE HEIGHT OF THE SILT FENCE SHALL BE A MINIMUM OF 16 INCHES ABOVE THE ORIGINAL GROUND SURFACE.

7. THE SILT FENCE SHALL BE PLACED IN AN EXCAVATED OR SLICED TRENCH CUT A MINIMUM OF 6 INCHES DEEP. THE TRENCH SHALL BE MADE WITH A TRENCHER, CABLE LAYING MACHINE, SLICING MACHINE, OR OTHER SUITABLE DEVICE THAT WILL ENSURE AN ADEQUATELY UNIFORM TRENCH DEPTH.

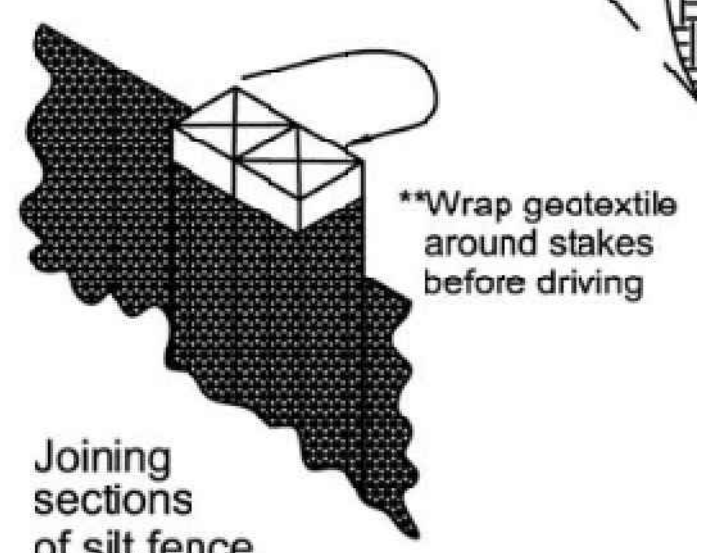
8. THE SILT FENCE SHALL BE PLACED WITH THE STAKES ON THE DOWNSLOPE SIDE OF THE GEOTEXTILE. A MINIMUM OF 8 INCHES OF GEOTEXTILE MUST BE BELOW THE GROUND SURFACE. EXCESS MATERIAL SHALL LAY ON THE BOTTOM OF THE 6-INCH DEEP TRENCH. THE TRENCH SHALL BE BACKFILLED AND COMPACTED ON BOTH SIDES OF THE FABRIC.

9. SEAMS BETWEEN SECTIONS OF SILT FENCE SHALL BE SPICED TOGETHER ONLY AT A SUPPORT POST WITH A MINIMUM 6-IN. OVERLAP PRIOR TO DRIVING INTO THE GROUND. (SEE DETAILS).

10. MAINTENANCE—SILT FENCE SHALL ALLOW RUNOFF TO PASS ONLY AS DIFFUSE FLOW THROUGH THE GEOTEXTILE. IF RUNOFF OVERTOPS THE SILT FENCE, FLOWS UNDER THE FABRIC OR AROUND THE FENCE ENDS, OR IN ANY OTHER WAY ALLOWS A CONCENTRATED FLOW DISCHARGE, ONE OF THE FOLLOWING SHALL BE PERFORMED, AS APPROPRIATE: 1) THE LAYOUT OF THE SILT FENCE SHALL BE CHANGED, 2) ACCUMULATED SEDIMENT SHALL BE REMOVED, OR 3) OTHER PRACTICES SHALL BE INSTALLED. SEDIMENT DEPOSITS SHALL BE ROUTINELY REMOVED WHEN THE DEPOSIT REACHES APPROXIMATELY ONE-HALF OF THE HEIGHT OF THE SILT FENCE. SILT FENCES SHALL BE INSPECTED AFTER EACH RAINFALL AND AT LEAST DAILY DURING A PROLONGED RAINFALL. THE LOCATION OF EXISTING SILT FENCE SHALL BE REVIEWED DAILY TO ENSURE ITS PROPER LOCATION AND EFFECTIVENESS. IF DAMAGED, THE SILT FENCE SHALL BE REPAIRED IMMEDIATELY. CRITERIA FOR SILT FENCE MATERIALS: 1. FENCE POST - THE LENGTH SHALL BE A MINIMUM OF 32 INCHES. WOOD POSTS WILL BE 2-BY-2-IN. NOMINAL DIMENSIONED HARDWOOD OF SOUND QUALITY. THEY SHALL BE FREE OF KNOTS, SPLITS AND OTHER VISIBLE IMPERFECTIONS, THAT WILL WEAKEN THE POSTS. THE MAXIMUM SPACING BETWEEN POSTS SHALL BE 10 FT. POSTS SHALL BE DRIVEN A MINIMUM 16 INCHES INTO THE GROUND, WHERE POSSIBLE. IF NOT POSSIBLE, THE POSTS SHALL BE ADEQUATELY SECURED TO PREVENT OVERTURNING OF THE FENCE DUE TO SEDIMENT/WATER LOADING. 2. SILT FENCE FABRIC - SEE CHART BELOW.



SILT FENCE DETAIL SCALE: NONE



SILT FENCE SPLICE DETAIL SCALE: NONE

Table 6.3.2 Minimum criteria for Silt Fence Fabric (ODOT, 2002)

FABRIC PROPERTIES	VALUES	TEST METHOD
Minimum Tensile Strength	120 lbs. (535 N)	ASTM D 4632
Maximum Elongation at 60 lbs	50%	ASTM D 4632
Minimum Puncture Strength	50 lbs (220 N)	ASTM D 4833
Minimum Tear Strength	40 lbs (180 N)	ASTM D 4533
Apparent Opening Size	≤ 0.84 mm	ASTM D 4751
Minimum Permittivity	1x10 ⁻² sec.-1	ASTM D 4491
UV Exposure Strength Retention	70%	ASTM G 4355

TEMPORARY AND PERMANENT SEEDING

THE LIMITS OF SEEDING AND MULCHING AREA AS SHOWN WITHIN THE PLAN SEEDING HAS BEEN ASSUMED TO BE 5' OUTSIDE THE WORK LIMITS OR RIGHT-OF-WAY WHICHEVER IS GREATER. ALL AREAS NOT DESIGNATED TO BE SEEDED SHALL REMAIN UNDER NATURAL GROUND COVER. THOSE AREAS DISTURBED OUTSIDE THE SEEDING LIMITS SHALL BE SEEDED AND MULCHED AT THE CONTRACTOR'S EXPENSE.

THE CONTRACTOR SHALL MAINTAIN A BUFFER STRIP AS DESIGNATED ON THE PLAN TO PREVENT SEDIMENT FROM LEAVING SITE. THIS STRIP SHALL BE MAINTAINED AT ALL TIMES AND NO SOIL SHALL BE PLACED ON THIS STRIP.

TEMPORARY SEED SHALL BE APPLIED BETWEEN CONSTRUCTION OPERATIONS ON SOIL THAT WILL NOT BE GRADED OR REWORKED FOR 45 DAYS OR MORE. THESE IDLE AREAS SHOULD BE SEEDED AS SOON AS POSSIBLE AFTER GRADING OR SHALL BE SEEDED WITHIN 7 DAYS. SEVERAL APPLICATIONS OF TEMPORARY SEEDING ARE NECESSARY ON TYPICAL CONSTRUCTION PROJECTS.

PERMANENT VEGETATION SHALL NOT BE CONSIDERED ESTABLISHED UNTIL GROUND COVER IS ACHIEVED WHICH, IN THE OPINION OF THE APPROVING AGENCY, PROVIDES ADEQUATE COVER AND IS MATURE ENOUGH TO CONTROL SOIL EROSION SATISFACTORILY AND TO SURVIVE ADVERSE WEATHER CONDITIONS.

SEEDING DATES	SPECIES	LB/1,000 SF	LB./AC.
MARCH 1 TO AUGUST 15	OATS	3	4 BUSHEL
	TALL FESCUE	1	40
	ANNUAL RYEGRASS	1	40
	PERENNIAL RYEGRASS	1	40
	TALL FESCUE	1	40
AUGUST 16 TO NOVEMBER 1	RYE	3	2 BUSHEL
	TALL FESCUE	1	40
	ANNUAL RYEGRASS	1	40
	WHEAT	3	2 BUSHEL
	TALL FESCUE	1	40
NOVEMBER 1 TO SPRING SEEDING	PERENNIAL RYEGRASS	1	40
	ANNUAL RYEGRASS	1	40
	TALL FESCUE	1	40
	PERENNIAL RYEGRASS	1	40
	ANNUAL RYEGRASS	1	40

NOTE: OTHER APPROVED SEED SPECIES MAY BE SUBSTITUTED

SEED MIX	SEED RATE		NOTES
	LB./1,000 SF	LB./AC.	
GENERAL USE			
CREeping RED FESCUE	1/2-1	20-40	
DOMESTIC RYEGRASS	1/4-1/2	10-20	
KENTUCKY RYEGRASS	1/4-1/2	10-20	
TALL FESCUE	1	40	
DWARF FESCUE	1	40	
STEEP BANKS OR CUT SLOPES			
TALL FESCUE	1	40	
CROWN VETCH	1/4	10	DO NOT SEED LATER THAN AUGUST
TALL FESCUE	1/2	20	
FLAT PEA	1/2	20	DO NOT SEED LATER THAN AUGUST
TALL FESCUE	1/2	20	
ROAD DITCHES AND SWALES			
TALL FESCUE	1	40	
DWARF FESCUE	2 1/4	5	
KENTUCKY RYEGRASS	1 1/2	60	
LAWNS			
KENTUCKY BLUEGRASS	1 1/2	60	
PERENNIAL RYEGRASS	1 1/2	60	
KENTUCKY BLUEGRASS	1 1/2	60	
CREeping RED FESCUE	1 1/2	60	FOR SHADED AREAS

Area requiring permanent stabilization	Time frame to apply erosion controls
Any areas that will be disturbed for one year or more	Within seven days of the start of the work
Any areas that will be disturbed for a surface water of less than 24 hours	Within seven days of the start of the work
Other areas of final grade	Within seven days of the start of the work

Area requiring temporary stabilization	Time frame to apply erosion controls
Any areas that will be disturbed for less than 24 hours	Within seven days of the start of the work
Any areas that will be disturbed for less than 24 hours and will not be used for a surface water of less than 24 hours	Within seven days of the start of the work
Any areas that will be disturbed for less than 24 hours and will not be used for a surface water of less than 24 hours	Within seven days of the start of the work

SOIL STABILIZATION

STABILIZATION OF DISTURBED AREAS SHALL, AT A MINIMUM, BE INITIATED IN ACCORDANCE WITH THE TIME FRAMES SPECIFIED IN THE FOLLOWING TABLES.

INLET PROTECTION (DANDY SACK)

INSTALLATION: INSTALL DANDY SACK PER MANUFACTURERS RECOMMENDATION. NO CASTING SHALL BE WRAPPED WITH LOOSE GEOSYNTHETIC MATERIAL, ONLY A BAG TYPE SYSTEM IS ACCEPTABLE. SACK SHALL HAVE OVERFLOWS AND ALLOW 2' OF SEDIMENT STORAGE BEFORE OVERFLOWS ARE ENGAGED

MAINTENANCE: AFTER SILT HAS DRIED, REMOVE IT FROM THE SURFACE OF THE BAG WITH BROOM.

SEDIMENT BAGS SHALL BE INSPECTED IMMEDIATELY AFTER EACH RAINFALL AND AT LEAST DAILY DURING PROLONGED RAINFALL.

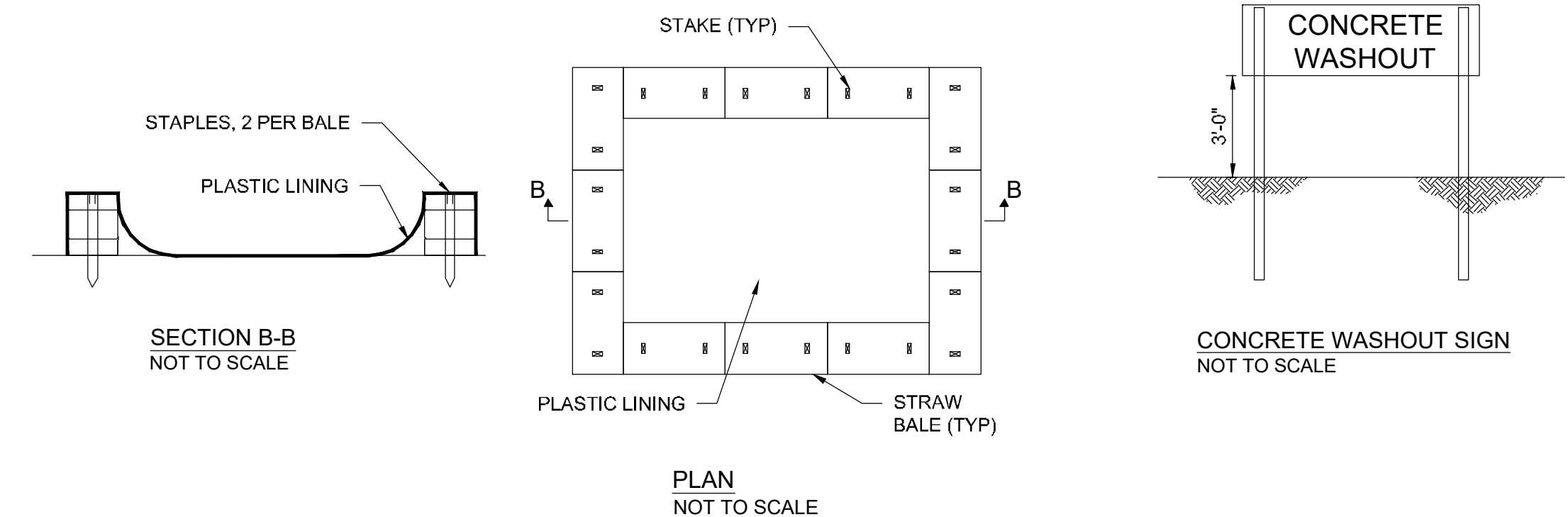
NECESSARY REPAIRS TO BARRIERS OR REPLACEMENT OF SEDIMENT BAGS SHALL BE ACCOMPLISHED PROMPTLY.

SEDIMENT DEPOSITS SHOULD BE REMOVED AFTER EACH RAINFALL. SEDIMENT DEPOSITS MUST BE REMOVED WHEN THE LEVEL OF DEPOSITION REACHES APPROXIMATELY ONE-HALF THE HEIGHT OF THE BARRIER.

ANY SEDIMENT DEPOSITS REMAINING IN PLACE AFTER THE SEDIMENT BAG BARRIER IS NO LONGER REQUIRED SHALL BE DRESSED TO CONFORM TO THE EXISTING GRADE, PREPARED AND SEEDED.

CONCRETE WASHOUT

- THE CONCRETE WASHOUT SIGN SHALL BE WITHIN 30' OF THE CONCRETE WASHOUT.
- WASHOUT FACILITIES SHALL BE CLEANED OR REPLACED AND READY FOR USE ONCE THE WASHOUT IS 75% FULL.
- WHEN THE CONCRETE WASHOUT IS NO LONGER NEEDED, THE HARDENED CONCRETE SHOULD BE REMOVED FROM THE SITE AND DISPOSED OF. MATERIALS USED TO CONSTRUCT THE CONCRETE WASHOUT SHALL ALSO BE REMOVED FROM THE SITE AND DISPOSED OF.



OMNESS DESIGN INC.
MARION CO. WWTP GARAGE
2160 RICHLAND RD

Scale : Horiz. = AS NOTED
Vert. = AS NOTED
Original Sheet Size = 24"x36"
Date : 2-6-2024
Sheet No. : 10 OF 10
S:\2023\202
Dwg. No. : 23-202-001

EASEMENT REFERENCE			REVISIONS			
City's No.	County Recorder	Grantor	No.	Description	Approval	Date
	Volume	Page	1	REVISE UTILITY CONNECTIONS	DJW	2/16/24
			AS BUILT			

Plans Prepared By :
Makeover & Associates, Inc.
P.O. BOX 325, 1810 E. MANSFIELD ST.
BUCYRUS, OHIO 44820
Phone: (419) 562-7757 Fax: (419) 562-4717

DYLAN J. WYATT
E-86763
Ohio Reg. No. _____ Date _____

SWP3 DETAILS

ENG. FILE NO. _____
IMP. ACCT. NO. _____
CONTRACT NO. _____
COMPLETION DATE _____
CONTRACTOR _____